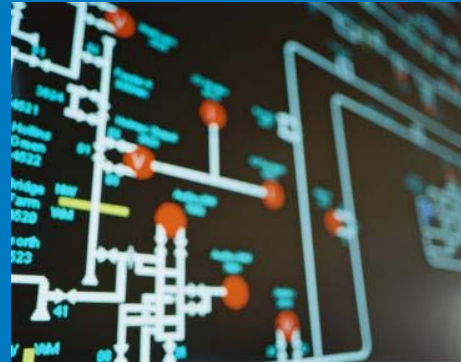
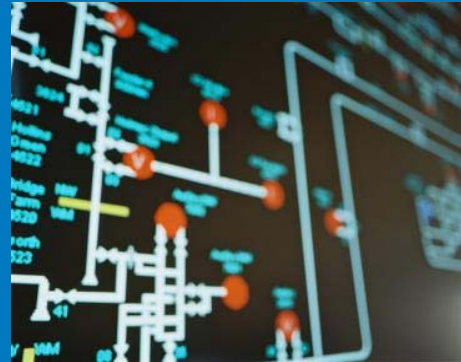


Operational Overview

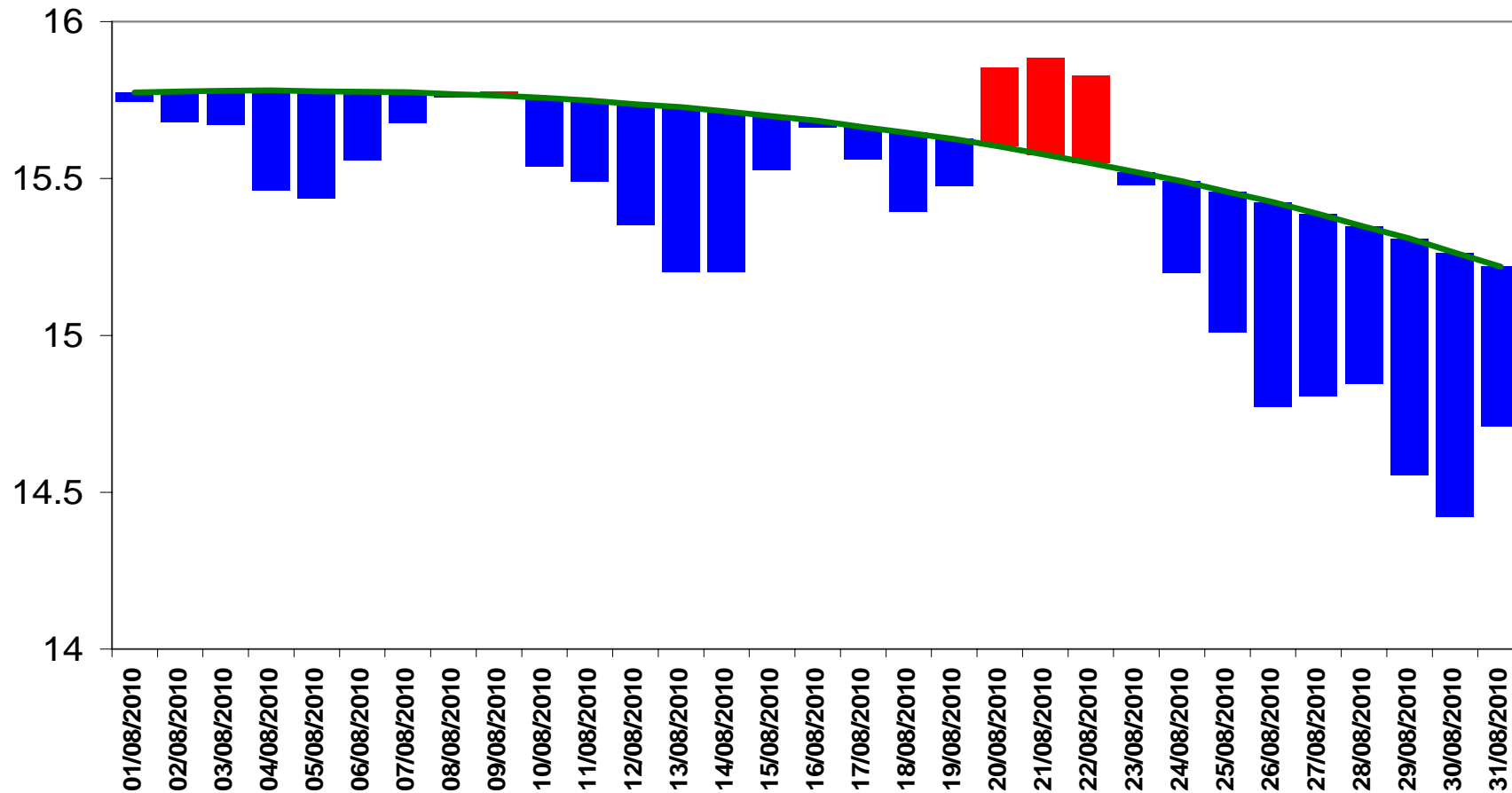


Weather



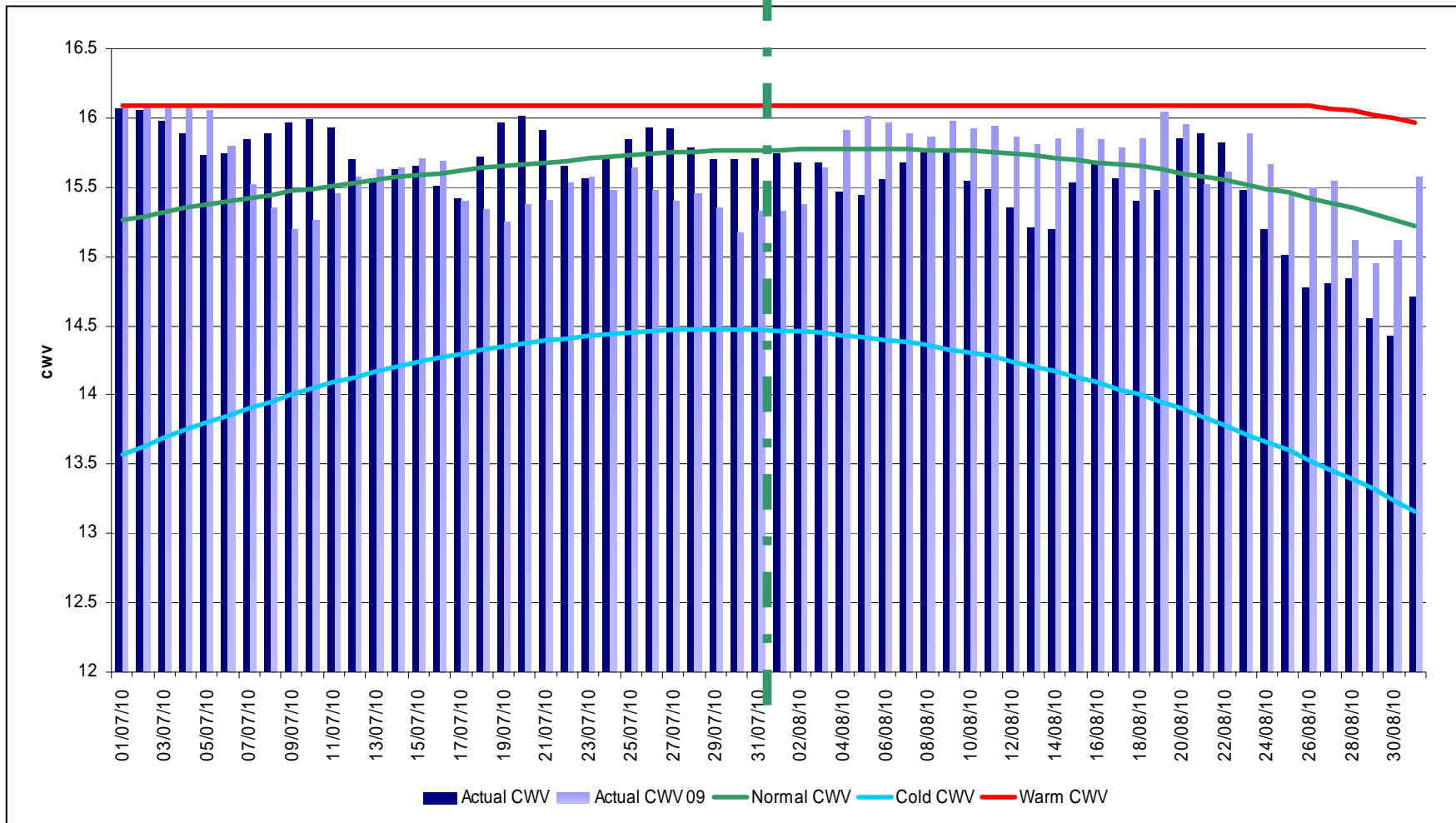
Weather – August 2010

National CWV and 17 year SNCW



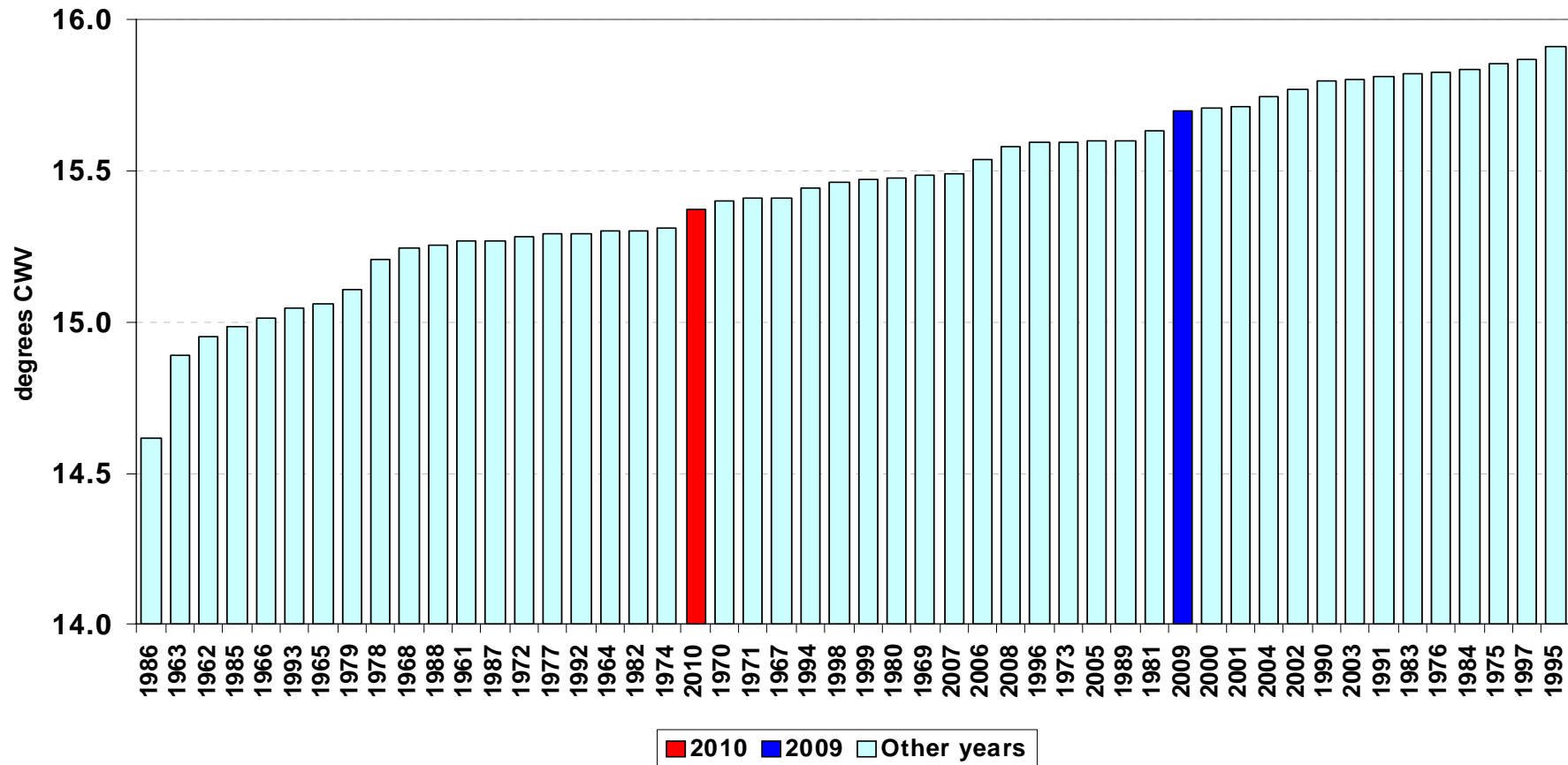
Composite Weather Variables

1st July to 31st August 2010

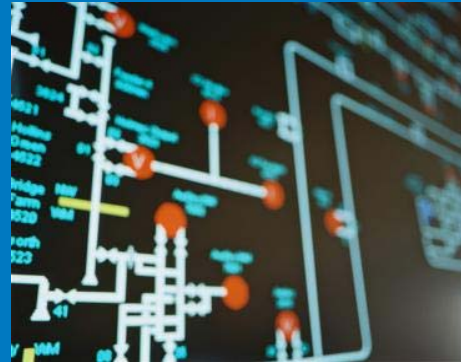


Mean Composite Weather Variables

Mean National Composite Weather for August

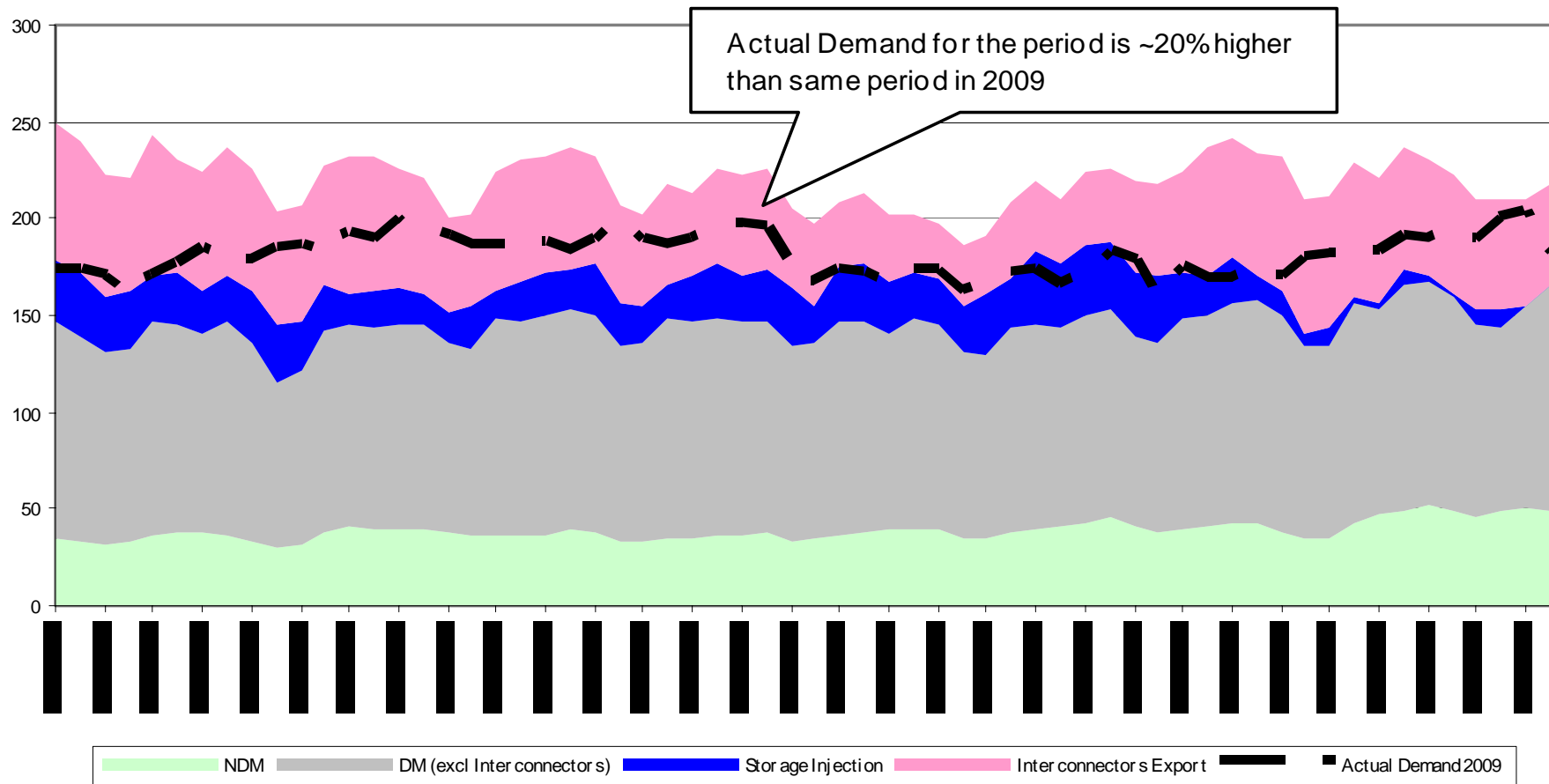


Demands



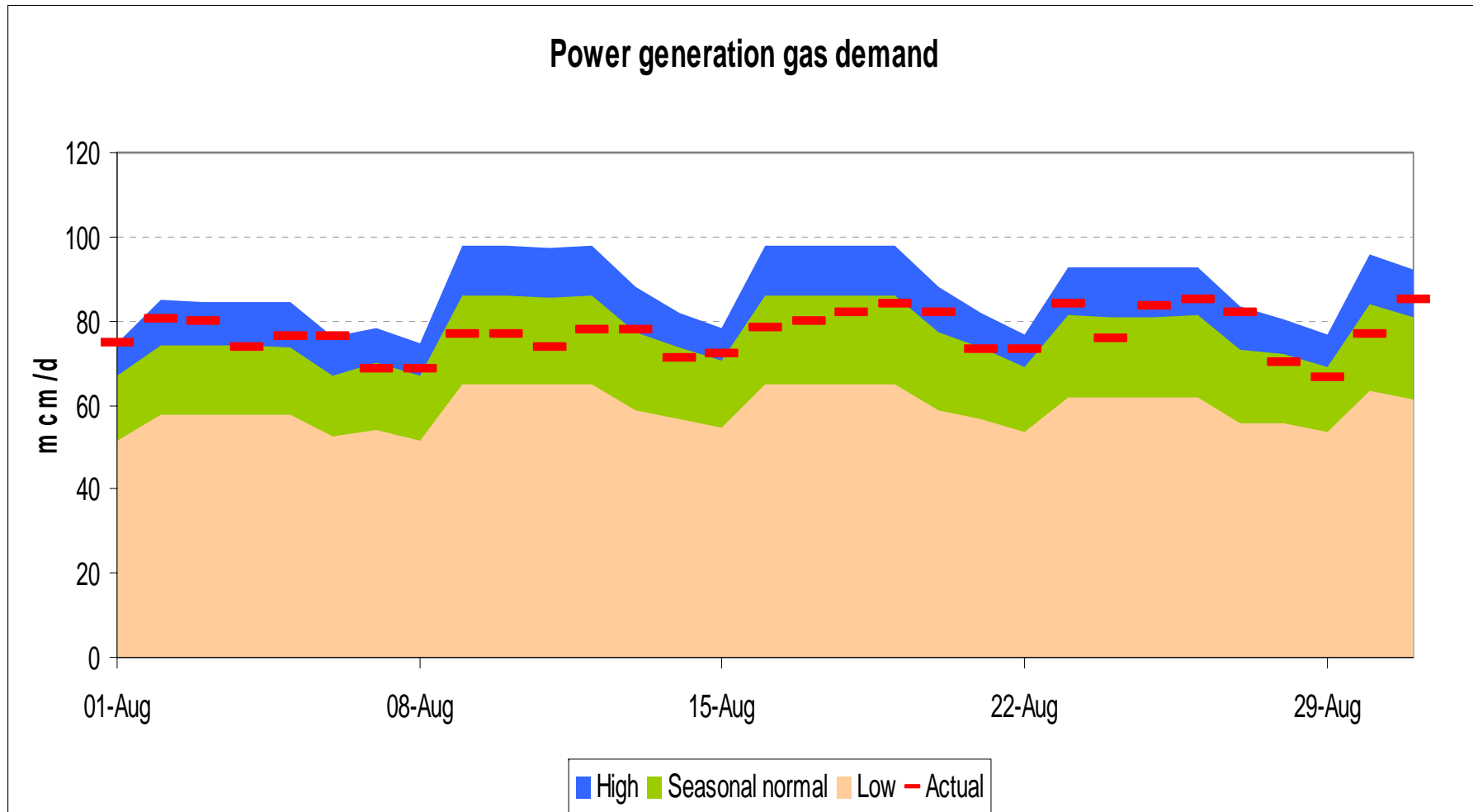
Gas Demand Breakdown

1st July to 31st August 2010

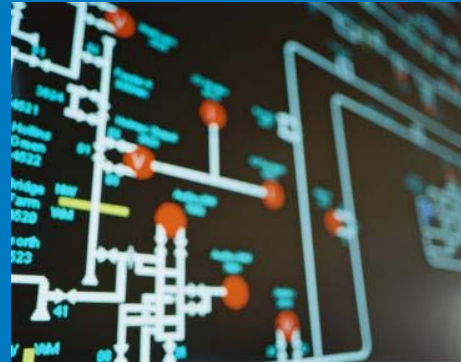


Power Generation

1st to 31st August 2010

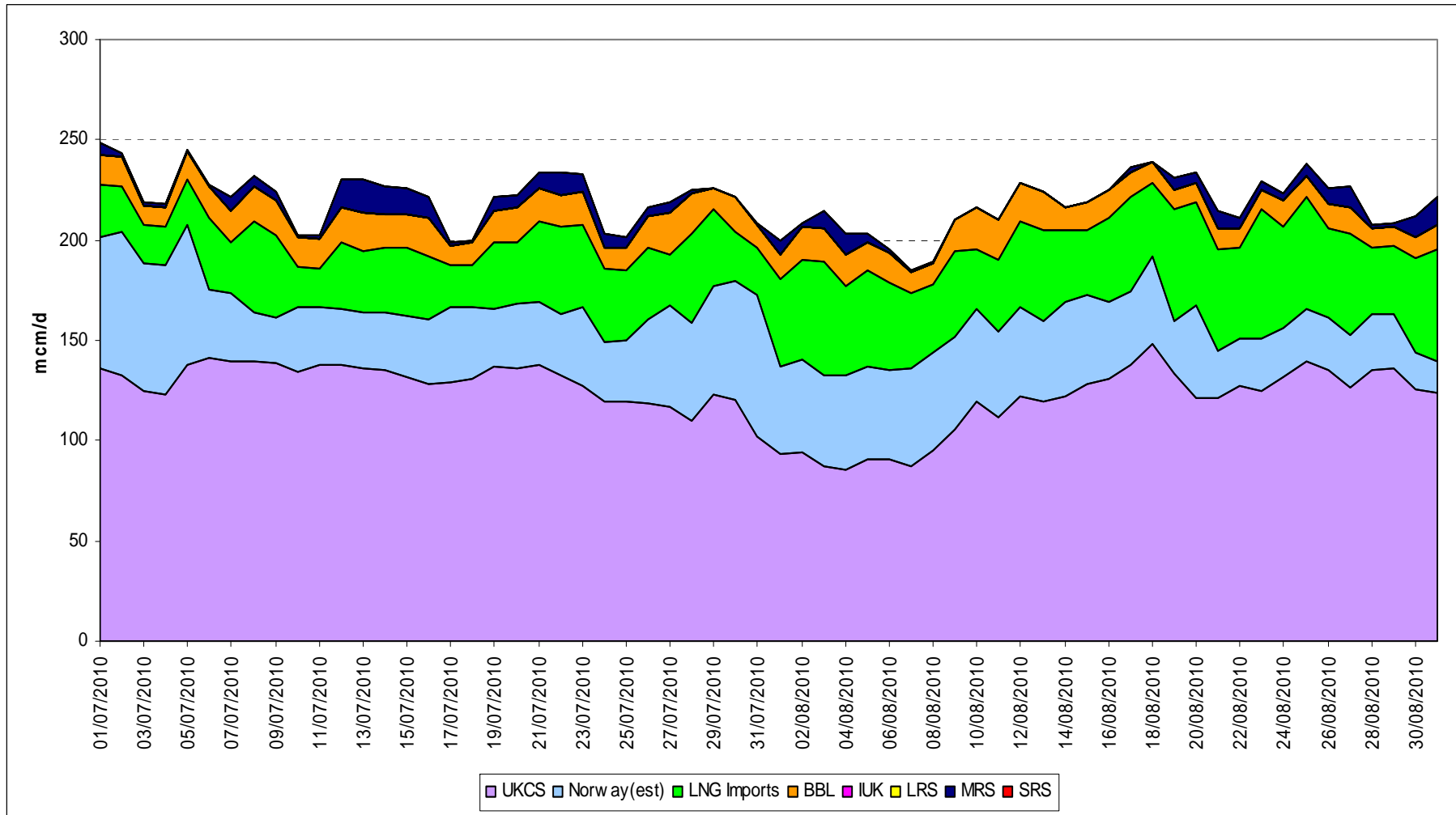


Supplies



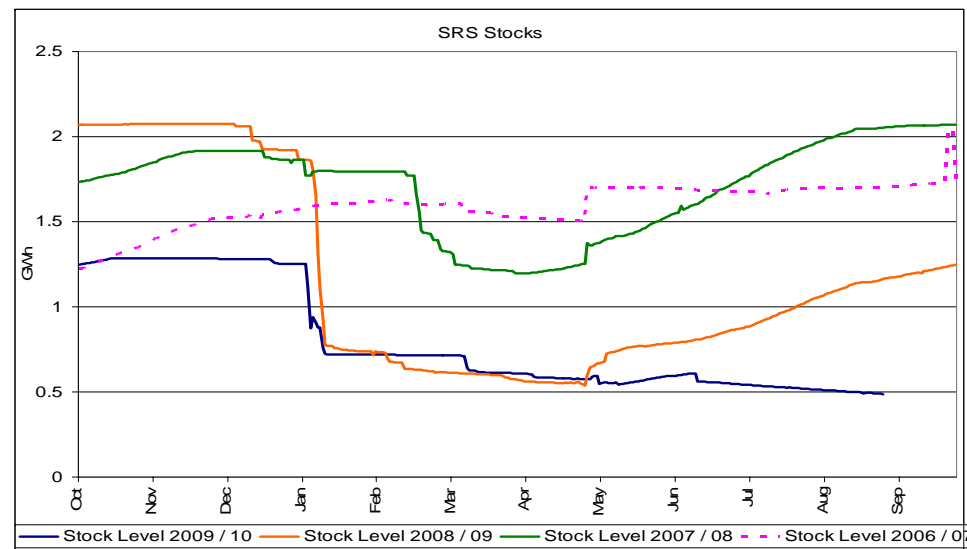
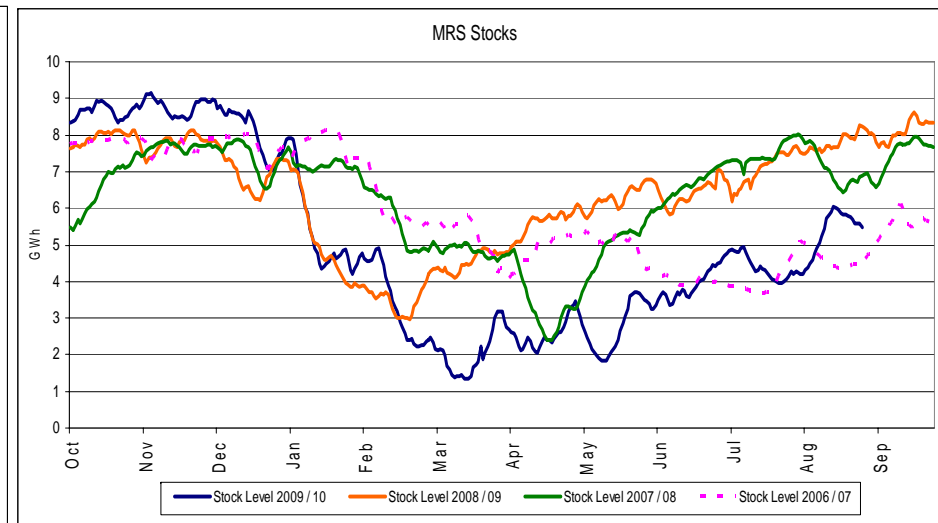
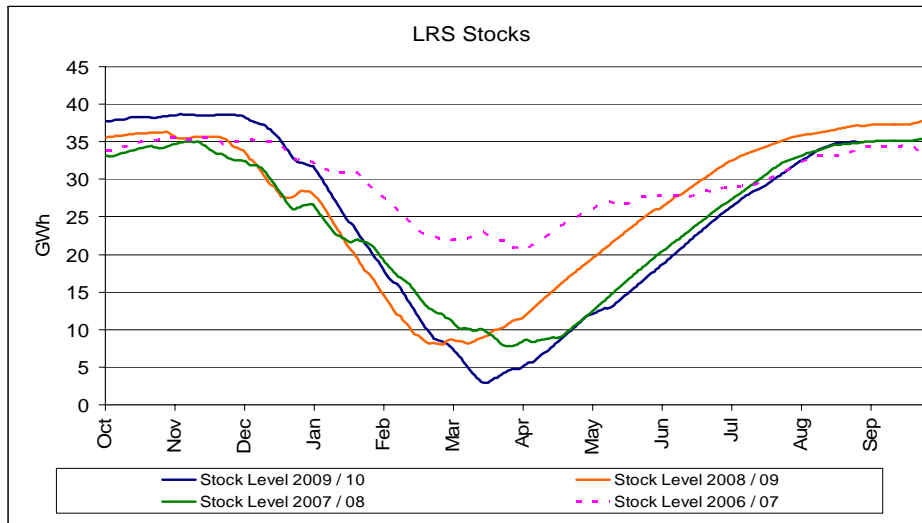
Gas Supply Breakdown

1st July to 31st August 2010



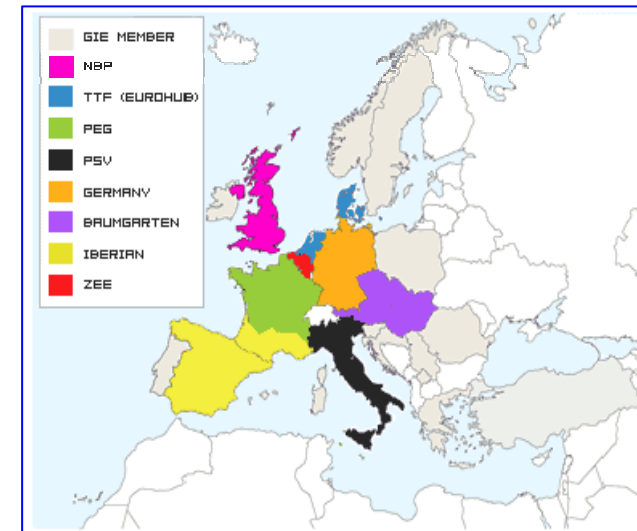
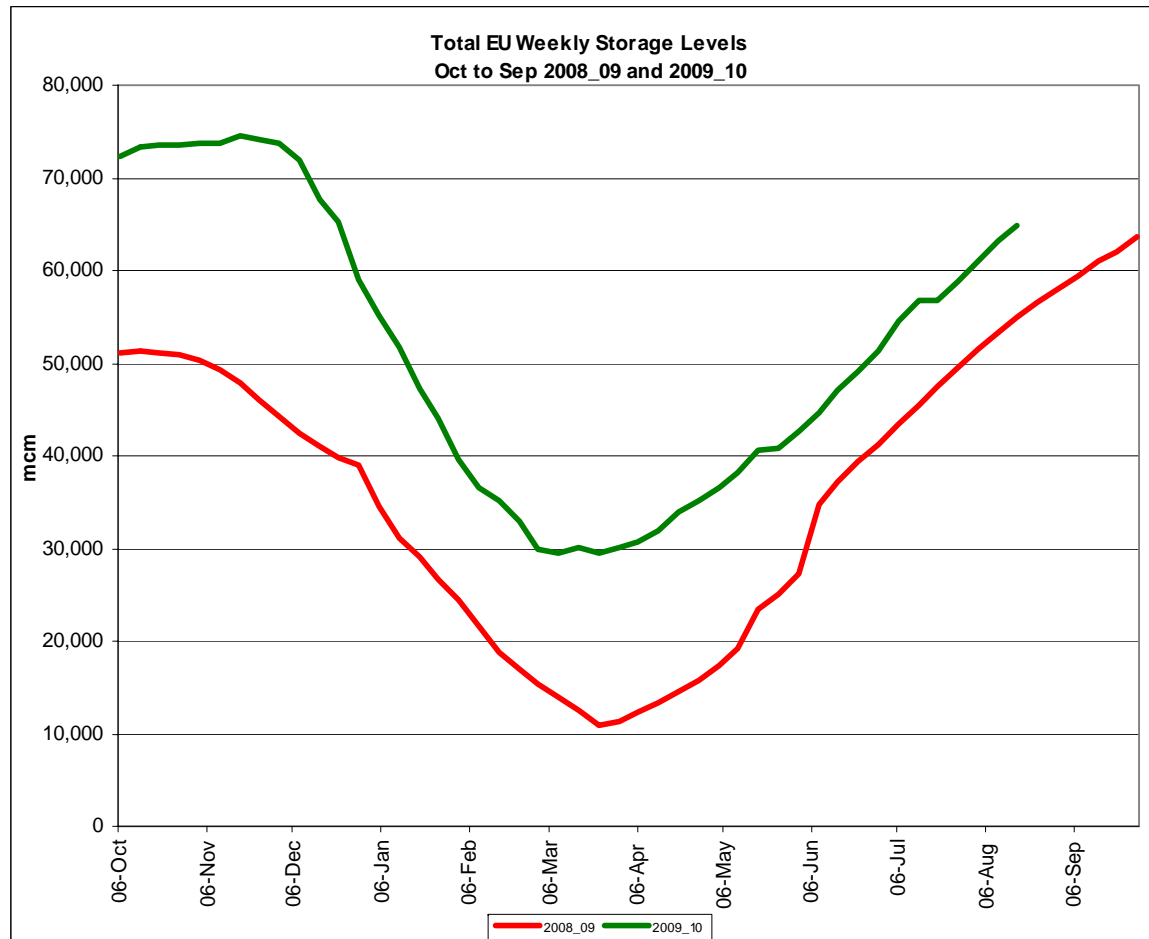
Storage Stocks - UK

From 1st October 2009 to 31st August 2010



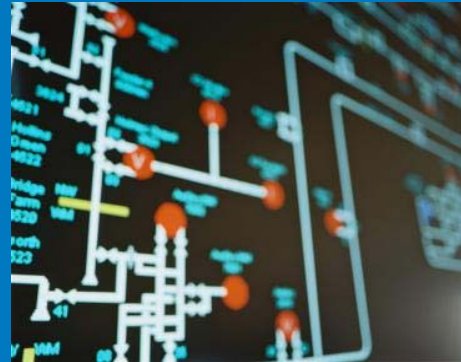
Storage Stocks - EU

From 1st October 2009 to 30th August 2010



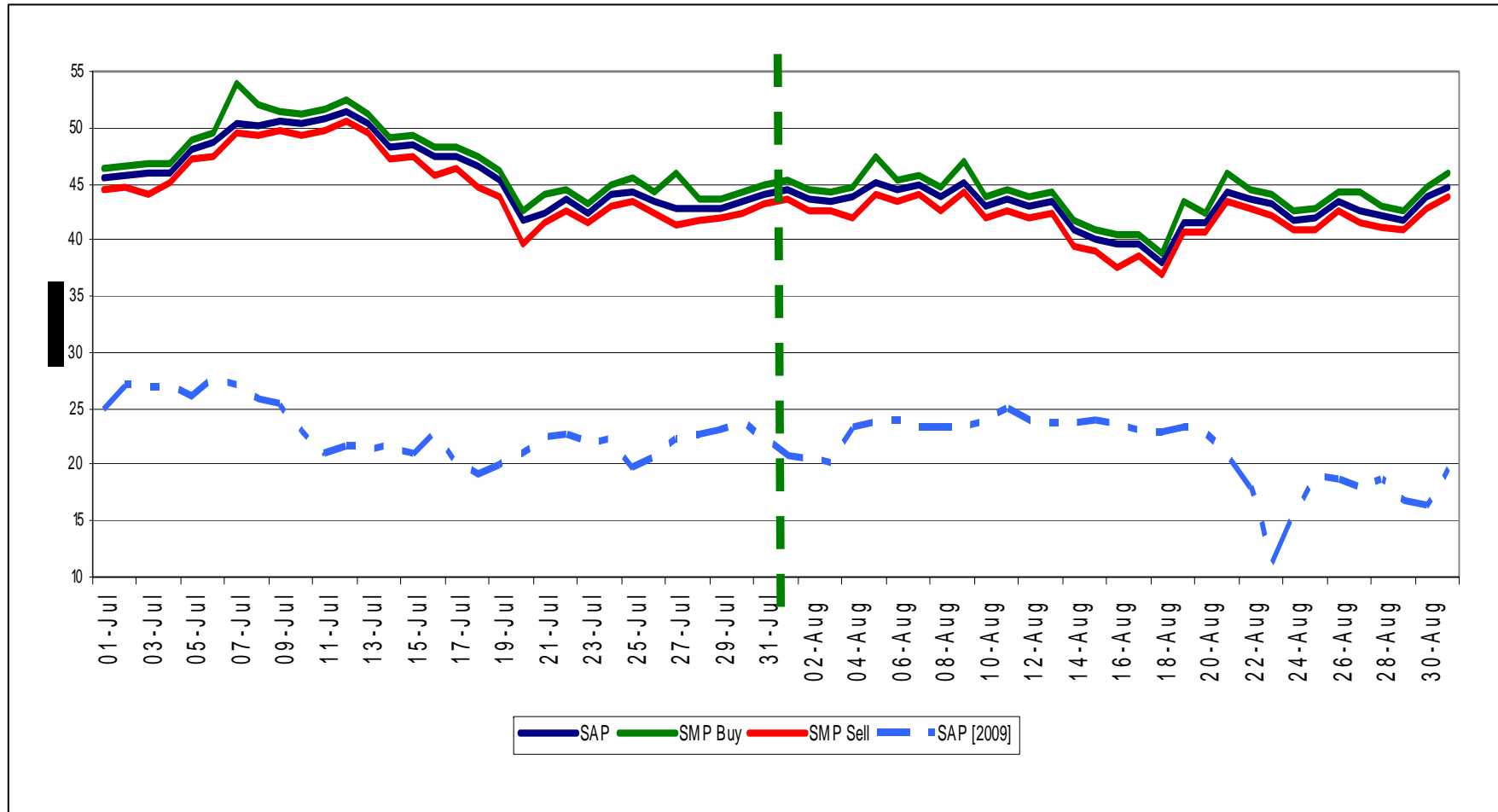
Hub Area	Stock Level	% Full
Baumgarten	12503,93 mcm	84,24 %
Germany	17242,89 mcm	93,83 %
Iberian	7019,00 mcm	88,36 %
NBP	3946,00 mcm	82,97 %
PEG	5338,00 mcm	78,27 %
PSV	12543,48 mcm	84,03 %
TTF (Eurohub)	1670,95 mcm	81,27 %
ZEE	565,98 mcm	86,41 %
TOTAL HUBS	60830,23	86,43 %

Transporter Actions and Neutrality



System Prices

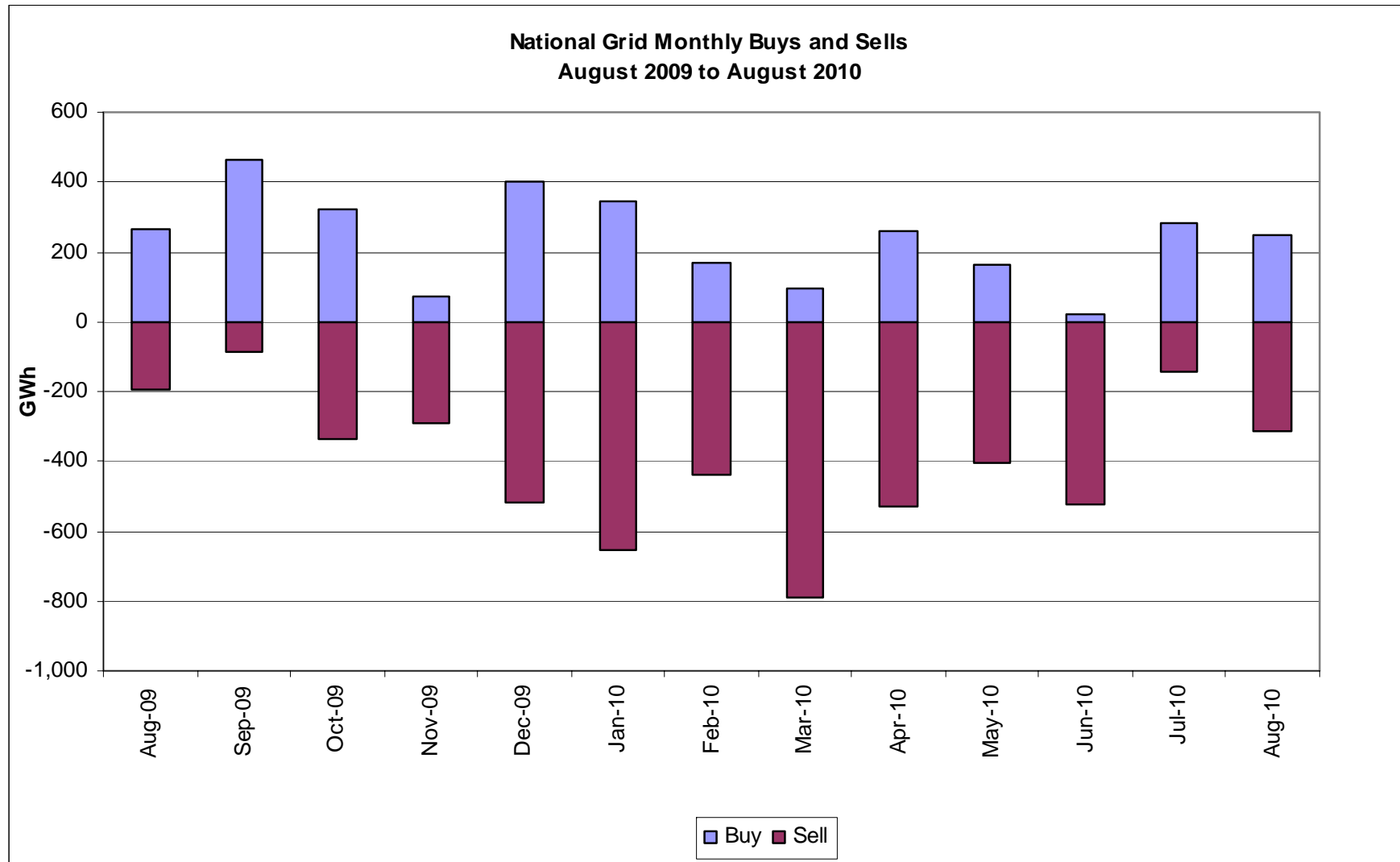
1st July to 31st August 2010



Transporter Energy Traded on the OCM

Buys and Sells by Month

From August 2009 to August 2010



Days of Default SMP Prices

From 1st August to 31st August 2010

Percentage of Days of Default SMP

SMP Buy

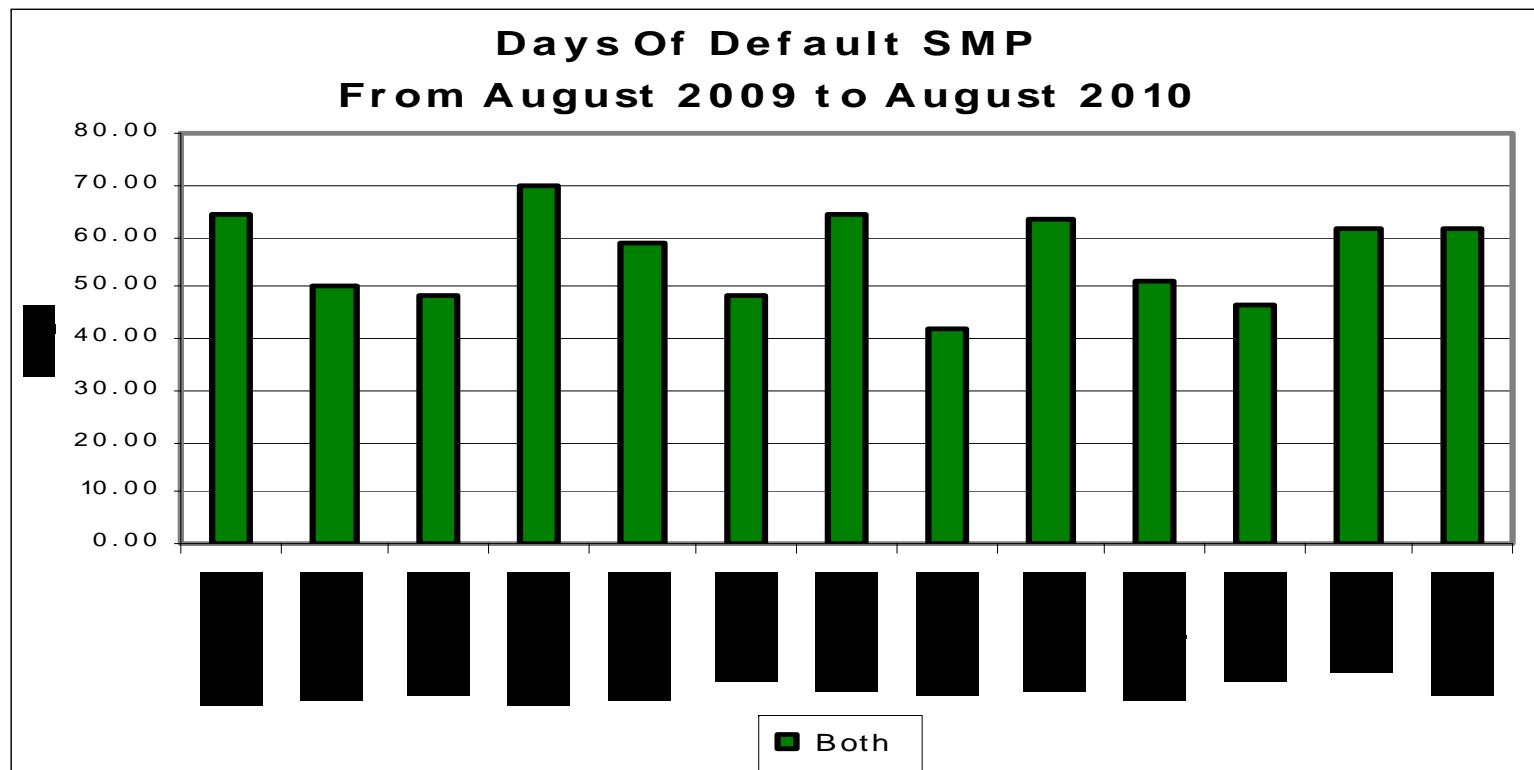
80.6%

SMP Sell

80.6%

Both

61.3%

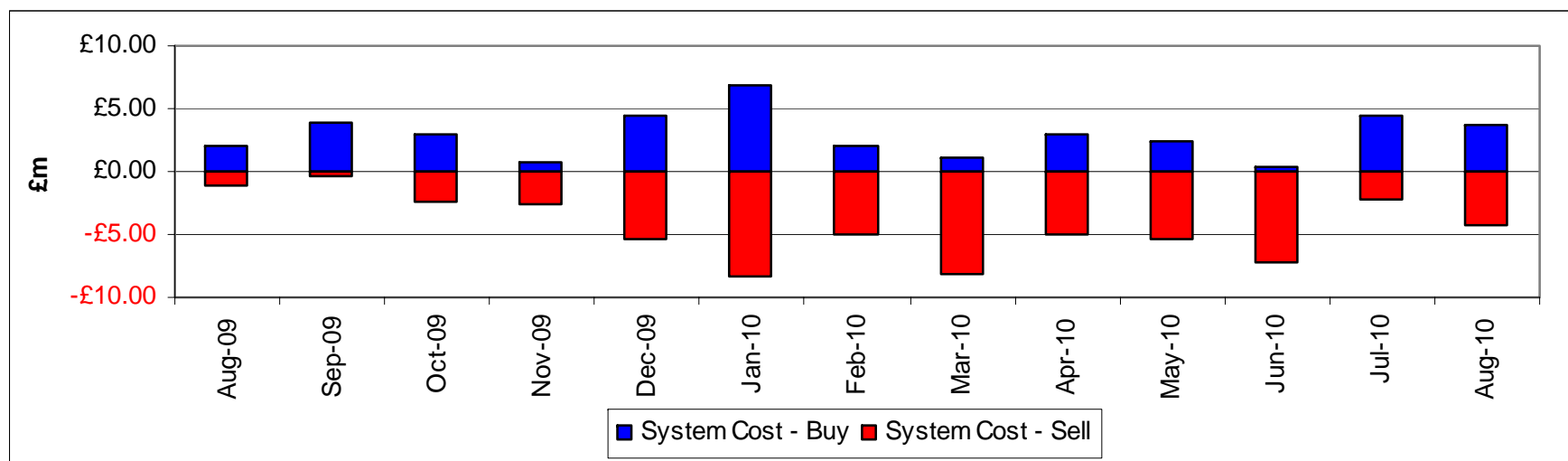


Transporter Actions on the OCM Mechanism

Revenues / Costs

From 1st October 2009 to 31st August 2010

	Quantity (TWh)	Average Price (p/KWh)	Average Price (p/therm)	Cost (£m)
System Buy	2.37	1.35	39.53	£31.97
System Sell	-4.95	1.13	33.18	-£56.00
Net Position	-2.58 Sell			-£24.03

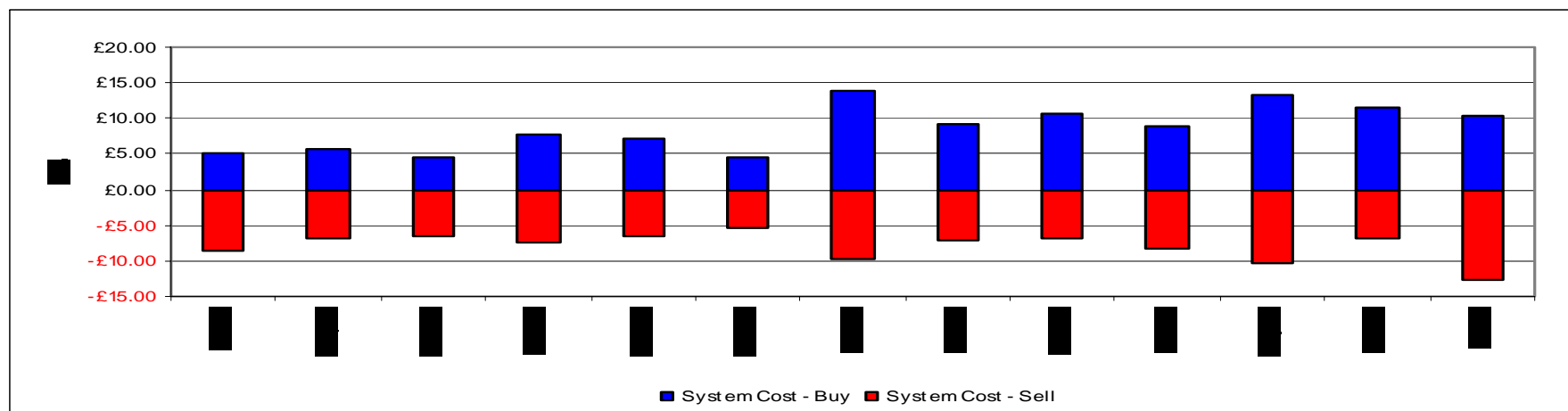


Shipper Imbalances

Revenues / Costs

From 1st October 2009 to 31st July 2010

System	Quantity (TWh)	Average Price (p/KWh)	Average Price (p/therm)	Cost £m
System Buy	9.23	1.13	33.02	£103.98
Shipper overdelivery/cost to neutrality				
System Sell	-7.02	1.22	35.77	-£85.70
Shipper underdelivery/revenue to neutrality				
Net Position	2.21 Buy			£18.28



Scheduling Revenues

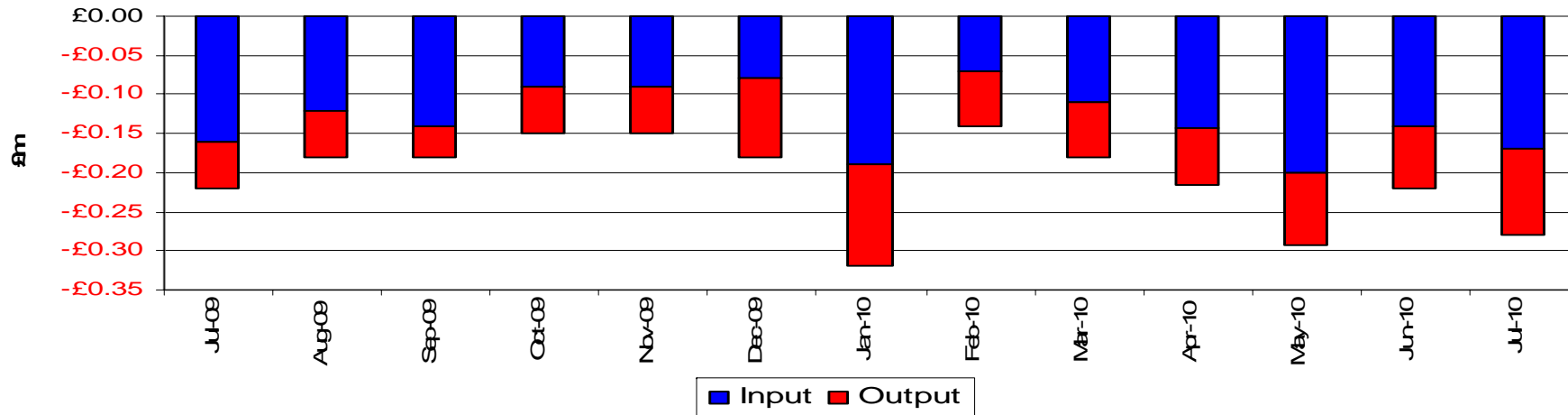
From 1st October 2009 to 31st July 2010

Cost £m

Input -£1.28

Output -£0.84

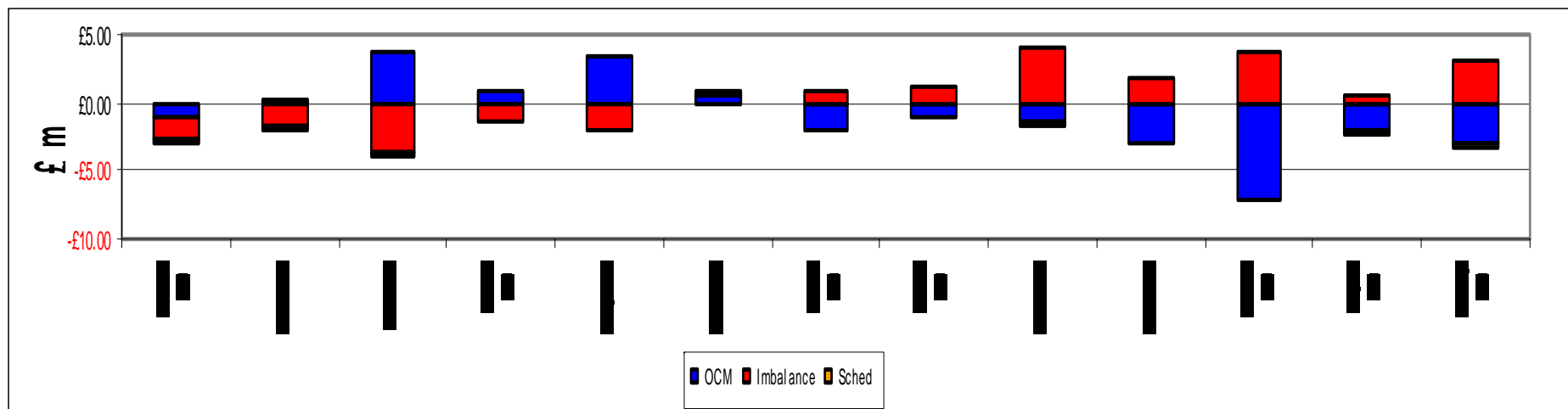
Total -£2.12



Balancing Costs

From 1st October 2009 to 31st July 2010

	£m
Transporter actions on OCM	-23.43
Imbalance Charge	18.28
Scheduling Charge	-2.12
<hr/>	
Balancing Cost	-7.27
(0.0007 p/KWh or 0.0199 p/Therm of Throughput)	

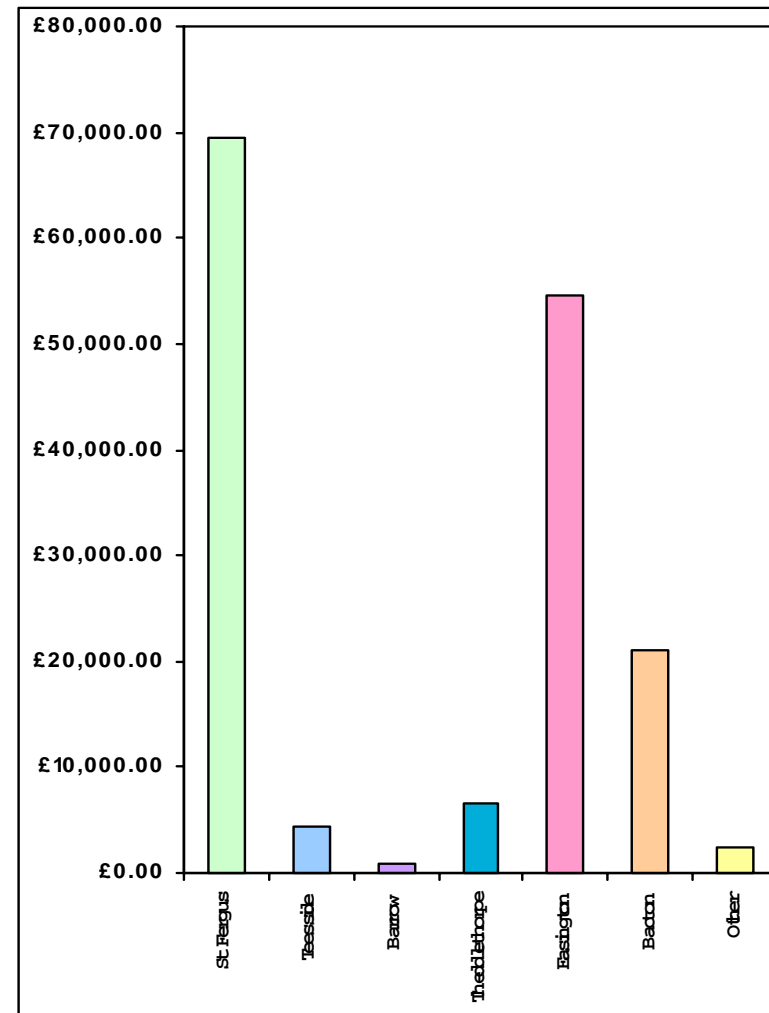


Capacity Neutrality

Revenues from DSEC and DAI

From 1st April 2010 to 31st July 2010

ASEP	Revenue
St Fergus	-£69,502.91
Teesside	-£4,484.53
Barrow	-£899.47
Theddlethorpe	-£6,505.27
Easington	-£54,553.97
Bacton	-£21,076.19
Other	-£2,316.05
TOTAL	-£159,338.39



Capacity Neutrality

Prompt Buy Backs

From 1st April 2010 to 31st July 2010

nationalgrid

THE POWER OF ACTION

ASEP	Cost	No.of days	Volume (kWh)
St Fergus	£0	0	0
Teesside	£0	0	0
Barrow	£0	0	0
Theddlethorpe	£0	0	0
Easington	£0	0	0
Bacton	£0	0	0
TOTAL	£0	0	0

Capacity Neutrality Net Cost / Revenue

From 1st April 2010 to 31st July 2010

DSEC/DAI Revenue	-159,338.40
Buy back costs	£0.00
Capacity Management Agreement	£0.00
Entry Capacity Overrun Revenue *	-£91,994.92
Net Revenue	-£251,333.32

* Adjusted to exclude Overrun Revenue from April 2010.