

# Operational Forum Meeting



Wednesday 12<sup>th</sup> January 2011, 10:30AM, Radisson Grafton Hotel,  
130 Tottenham Court Road, London.

# System Management Principles Statement



# System Management Principles Statement

---

Compliance report Period December 2010

Summary of balancing actions and breaches for  
December 2010

Performance compared to last year

# Summary Report

---

	Dec 2010
Total Number of Buy Actions	13
Total Number of Sell Actions	29
Total	42
Number of Material Breaches	0
Number of Non-Material Breaches	0

## 2009 / 2010 Comparison

	To Dec 2009	To Dec 2010
<b>Number of Balancing Actions</b> <b>(Calendar year to date)</b>	<b>345</b>	<b>398</b>
<b>Number of Material Breaches</b> <b>(Calendar year to date)</b>	<b>0</b>	<b>0</b>
<b>Number of Non Material Breaches</b> <b>(Calendar year to date)</b>	<b>0</b>	<b>0</b>

# Operational Overview

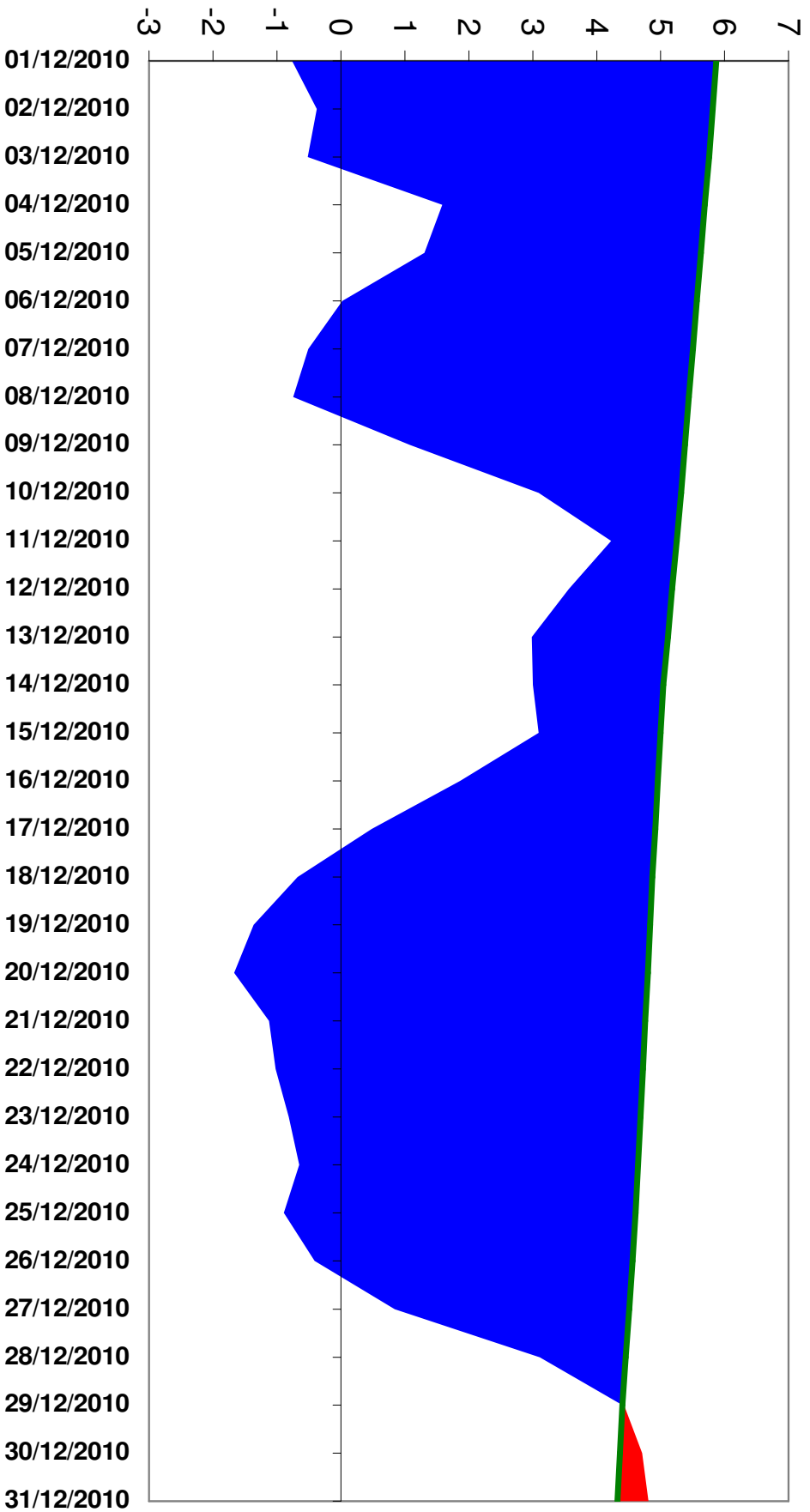


# Weather



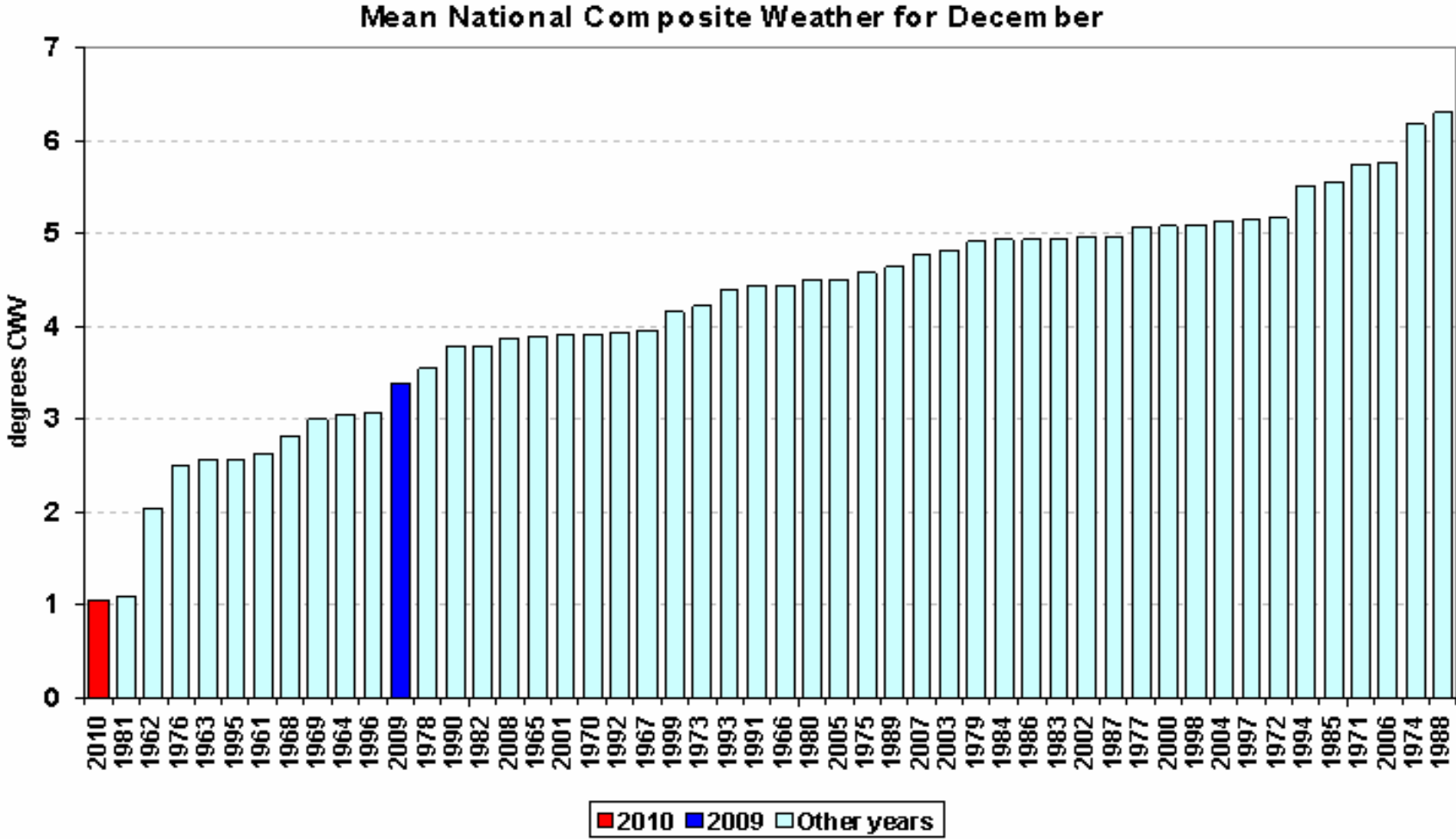
# Weather – December 2010

**National CWV and EP2 SNCW**





# Mean Composite Weather Variables – December 2010

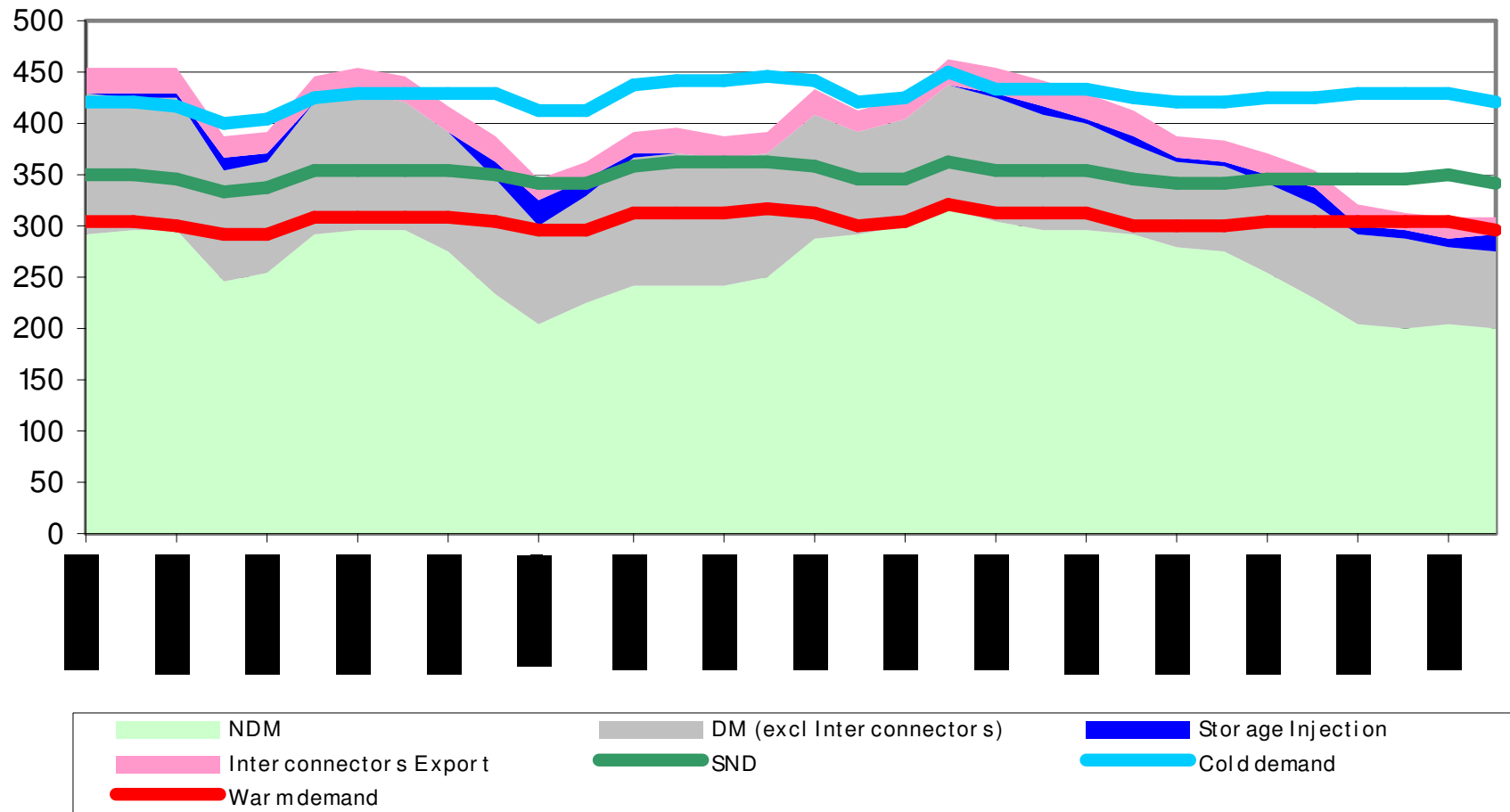


# Demands



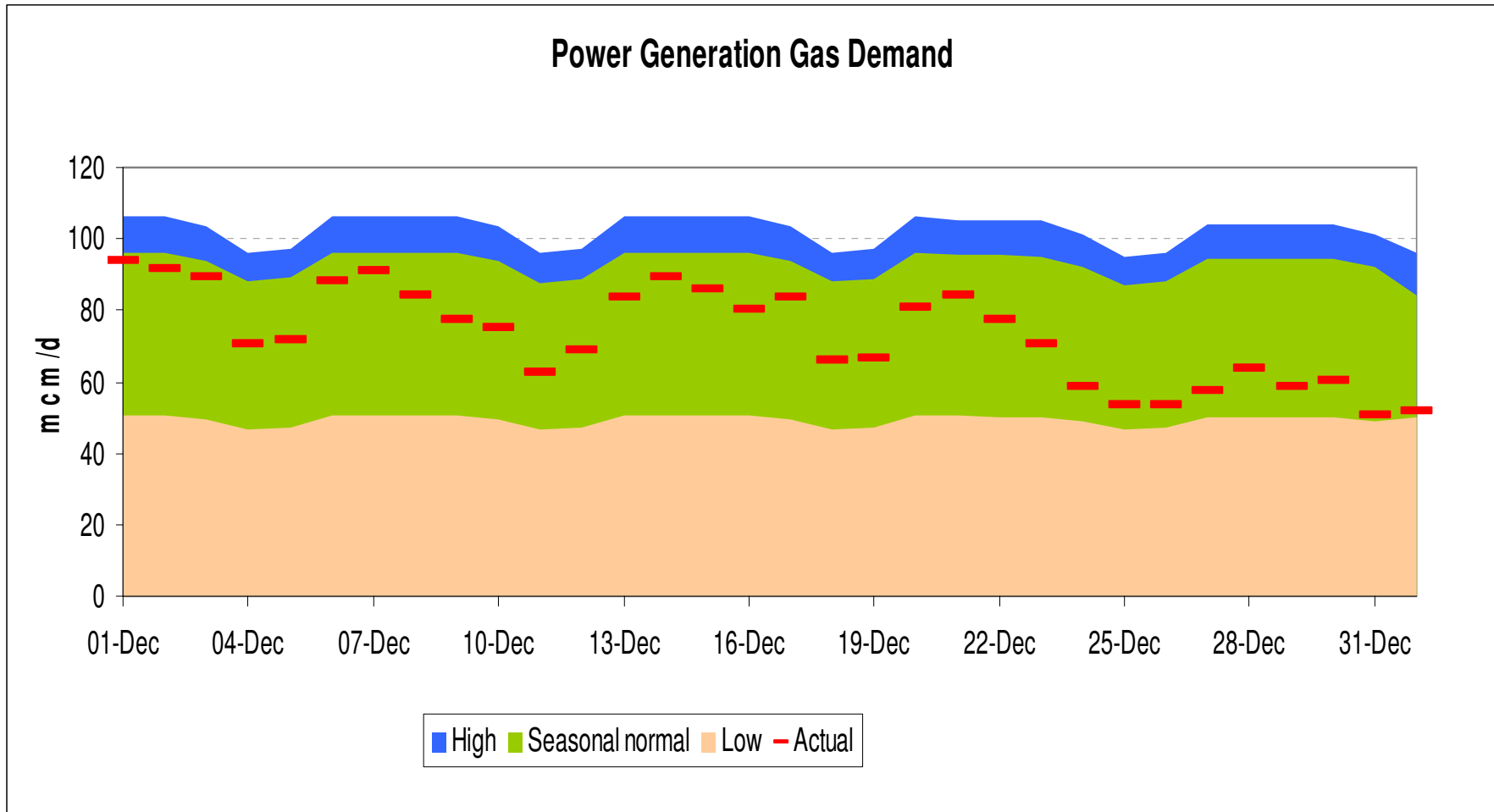
# Gas Demand Breakdown

1<sup>st</sup> December 2010 to 1<sup>st</sup> January 2011



# Power Generation

1st December 2010 to 1st January 2011

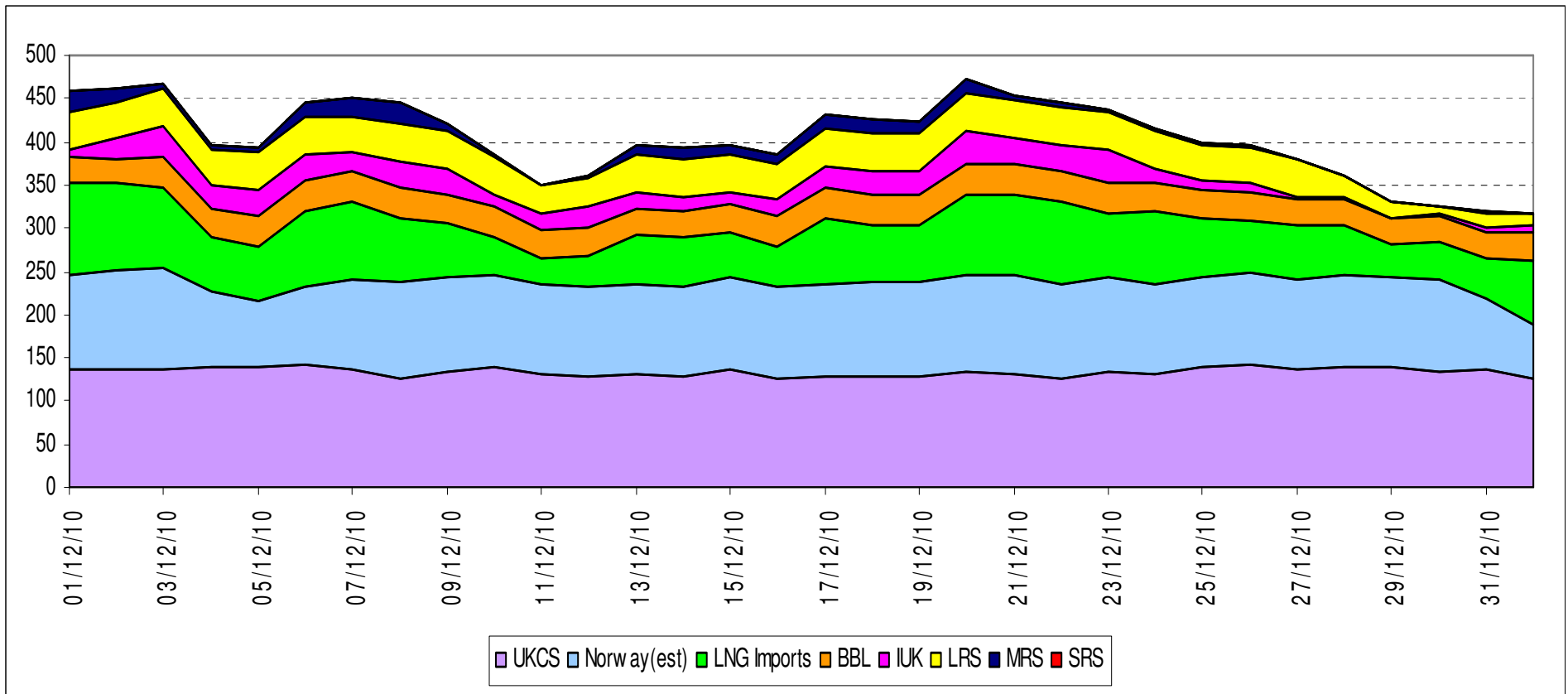


# Supplies



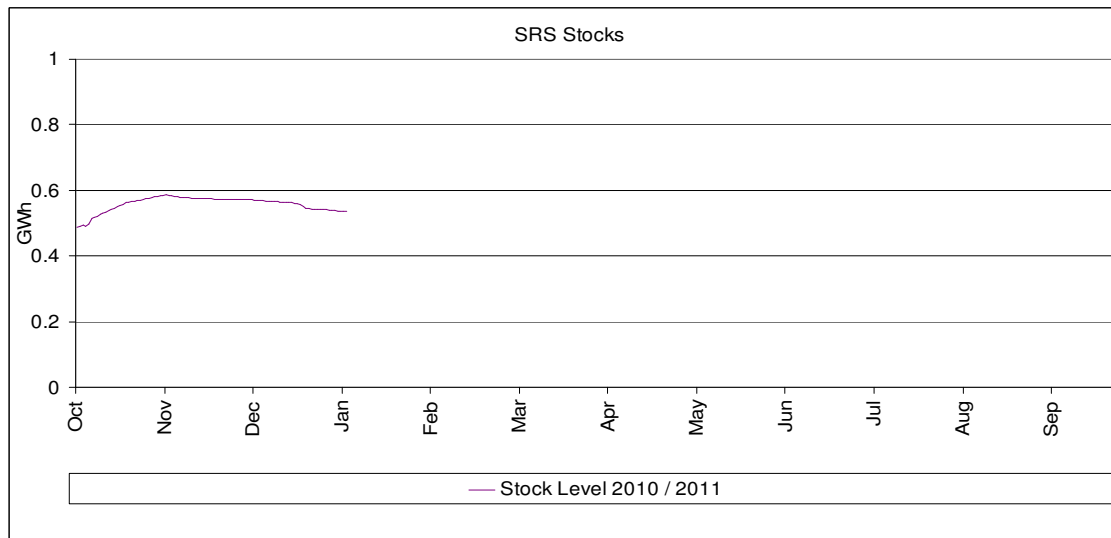
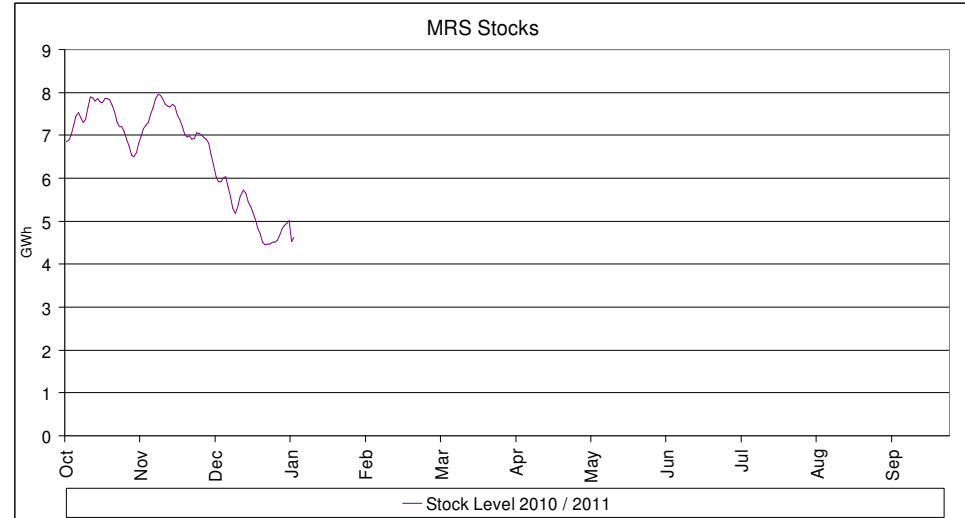
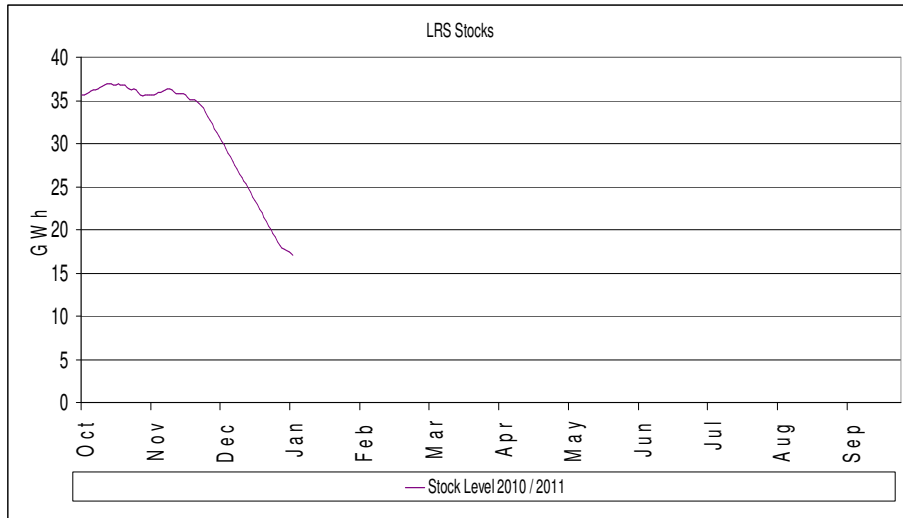
# Gas Supply Breakdown

1<sup>st</sup> December 2010 to 1<sup>st</sup> January 2011



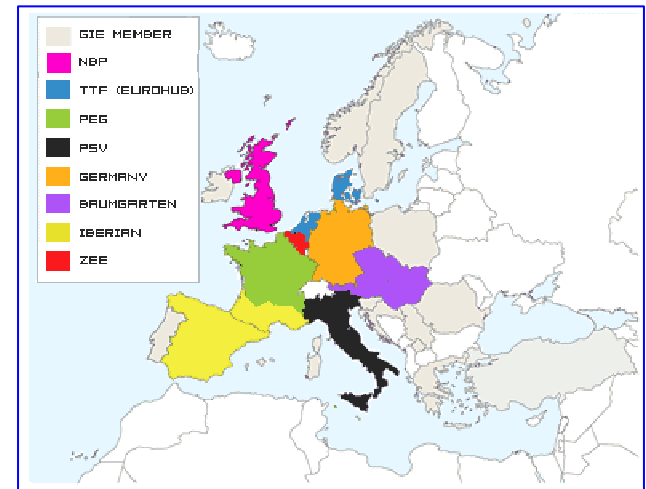
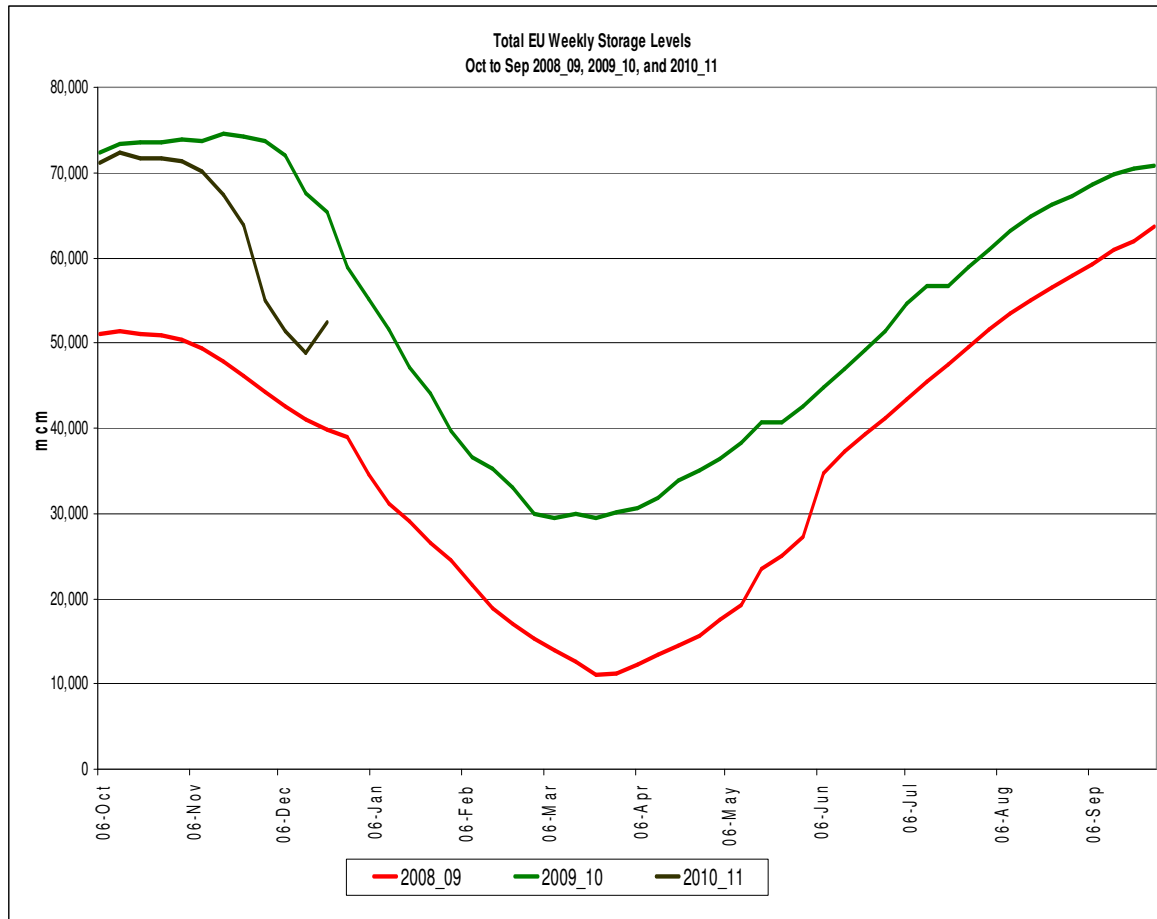
# Storage Stocks - UK

From 1<sup>st</sup> October 2010 to 3<sup>rd</sup> January 2011



# Storage Stocks - EU

From 1<sup>st</sup> October 2010 to 4<sup>th</sup> January 2011



Stocklevel status at 06:00am CET on Wednesday 05.01.11		
Hub Area	Stock Level	% Full
Baumgarten	10975,64 mcm	70,60%
Germany	13362,09 mcm	68,78%
Iberian	5799,86 mcm	73,01%
NBP	2097,00 mcm	44,09%
PEG	3260,00 mcm	47,80%
PSV	11615,33 mcm	77,81%
TTF (Eurohub)	1415,65 mcm	68,85%
ZEE	477,95 mcm	70,81%
<b>TOTAL HUBS</b>	<b>49003,52</b>	<b>67,92%</b>



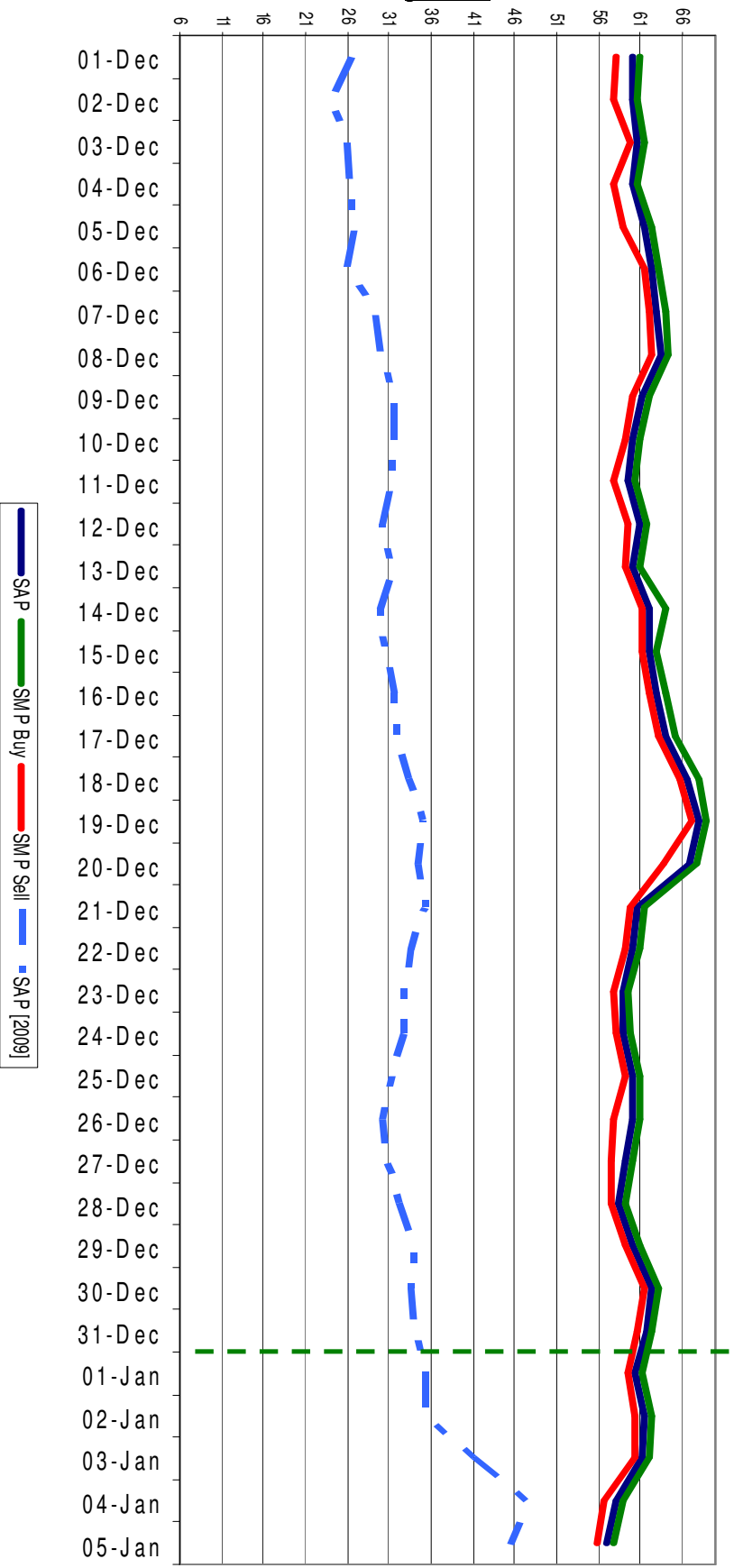
# Transporter Actions and Neutrality



# System Prices

1st December 2010 5th January 2011

**nationalgrid**  
THE POWER OF ACTION



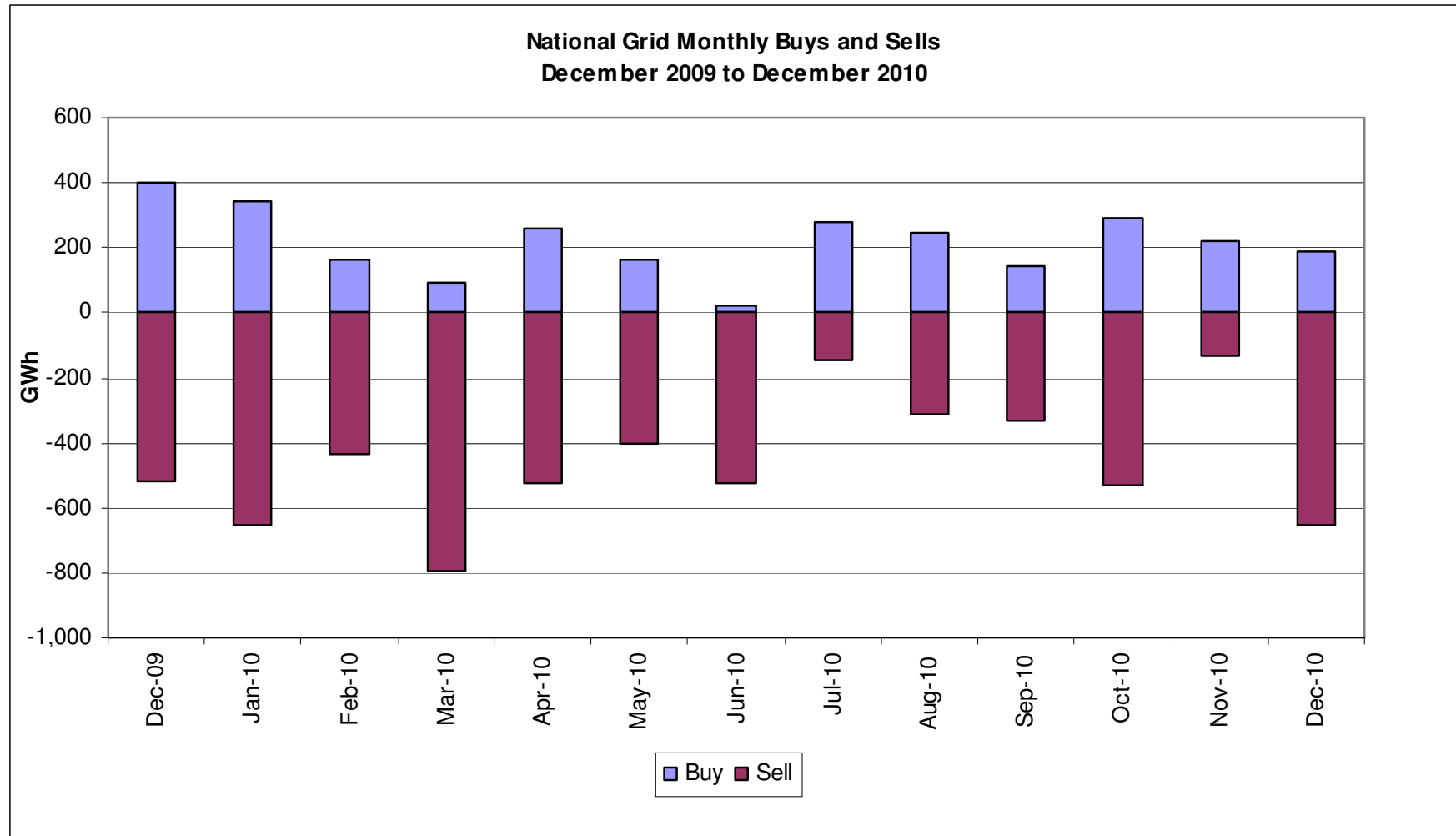
# Transporter Energy Traded on the OCM

Buys and Sells by Month

From December 2009 to December 2010



THE POWER OF ACTION



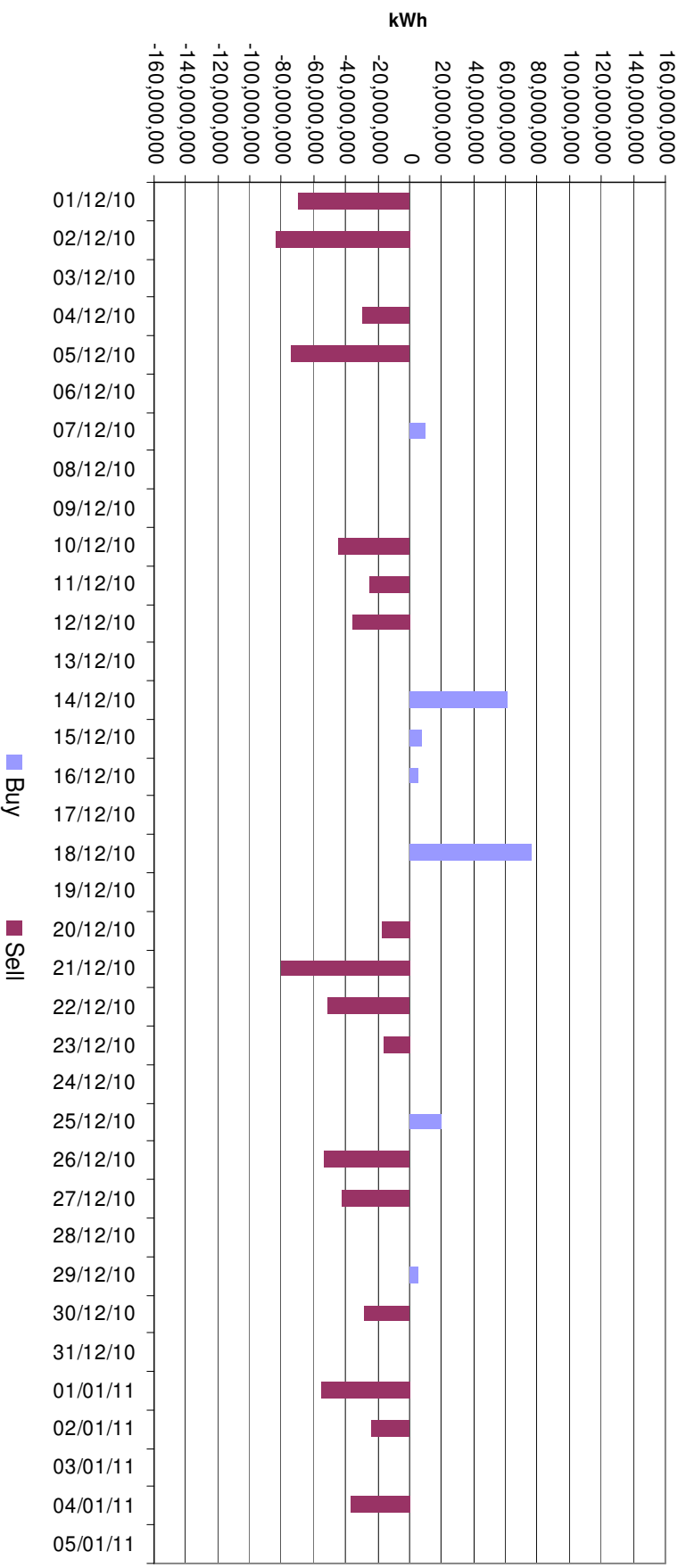
# Transporter Energy Traded on the OCM

buys and sells by day

**nationalgrid**

THE POWER OF ACTION

From 1<sup>st</sup> December 2010 to 5<sup>th</sup> January 2011

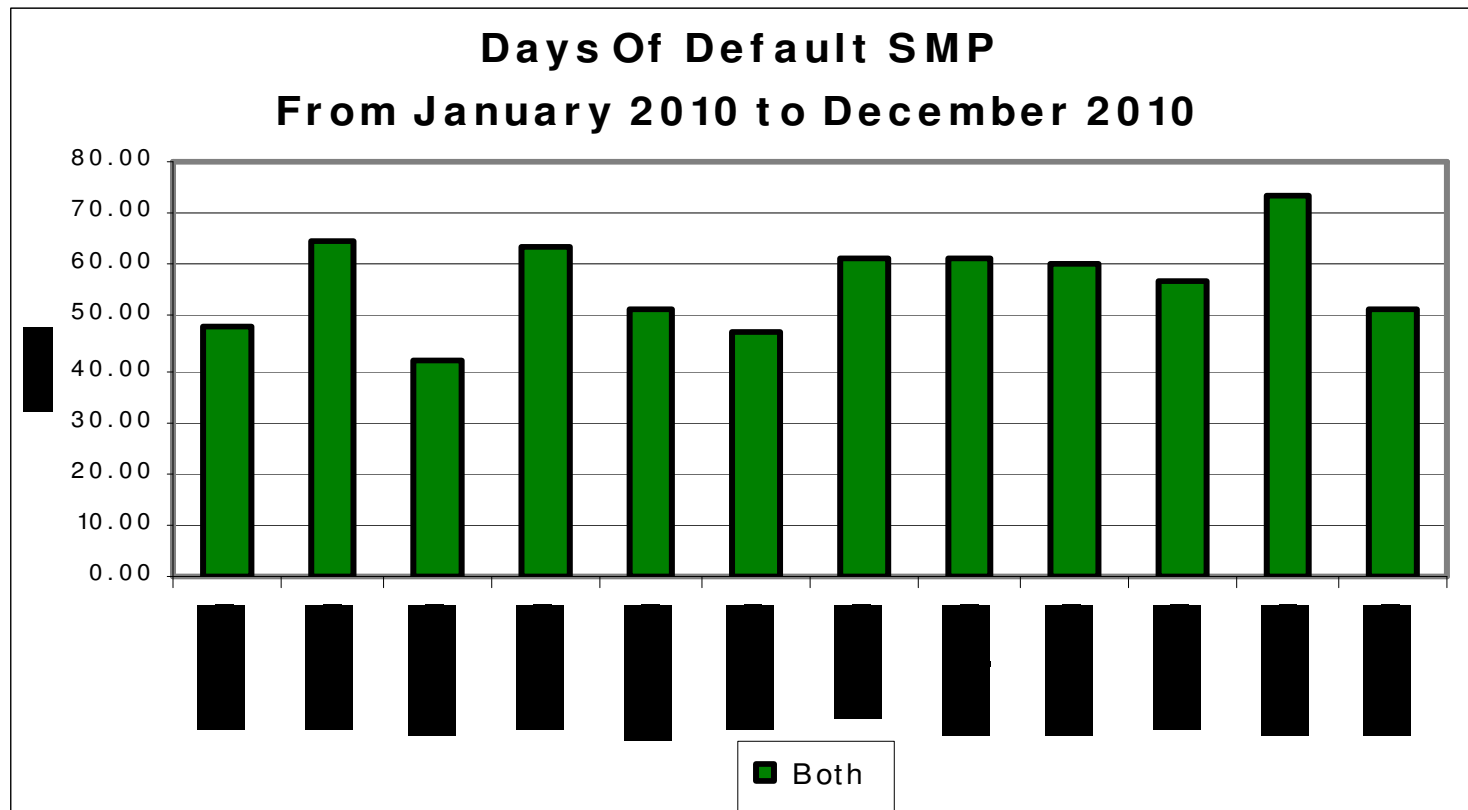


# Days of Default SMP Prices

From 1<sup>st</sup> January 2010 to 31<sup>st</sup> December 2010

## Percentage of Days of Default SMP

SMP Buy	SMP Sell	Both
80.65%	67.74%	51.61%

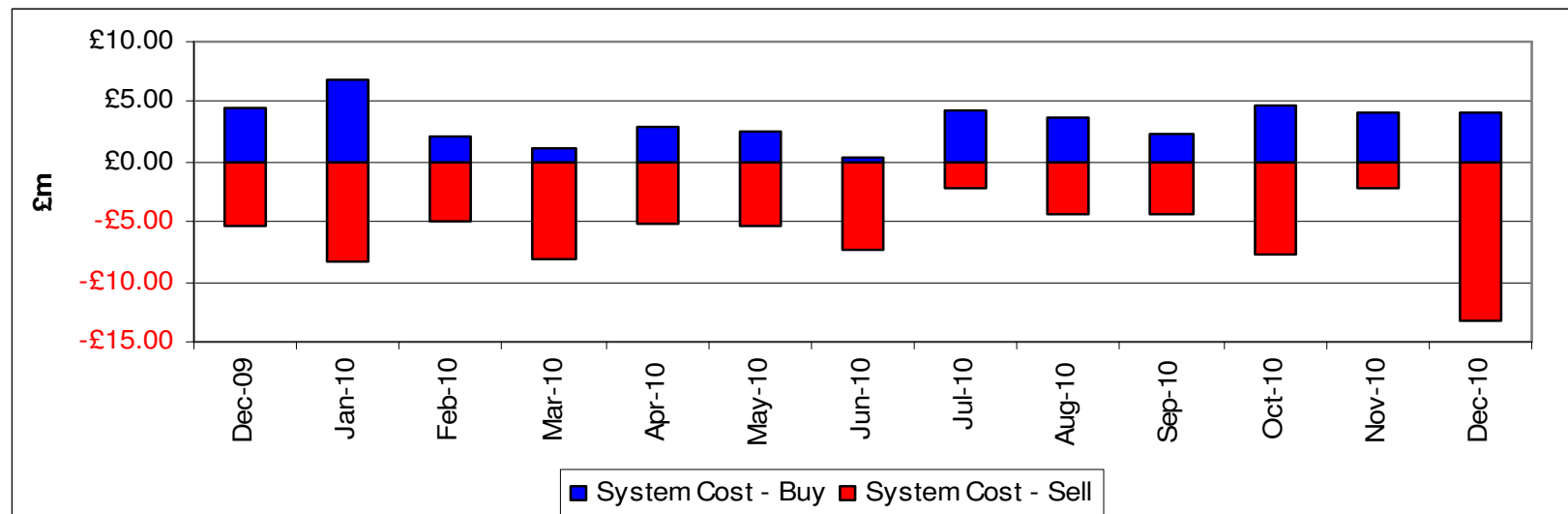


# Transporter Actions on the OCM Mechanism

## Revenues / Costs

From 1<sup>st</sup> October 2010 to 31<sup>th</sup> December 2010

	Quantity (TWh)	Average Price (p/KWh)	Average Price (p/therm)	Cost (£m)
<b>System Buy</b>	<b>0.70</b>	<b>1.83</b>	<b>53.54</b>	<b>£12.78</b>
<b>System Sell</b>	<b>-1.31</b>	<b>1.76</b>	<b>51.52</b>	<b>-£23.06</b>
<b>Net Position</b>	<b>-0.61 Sell</b>			<b>-£10.28</b>



# Shipper Imbalances

## Revenues / Costs

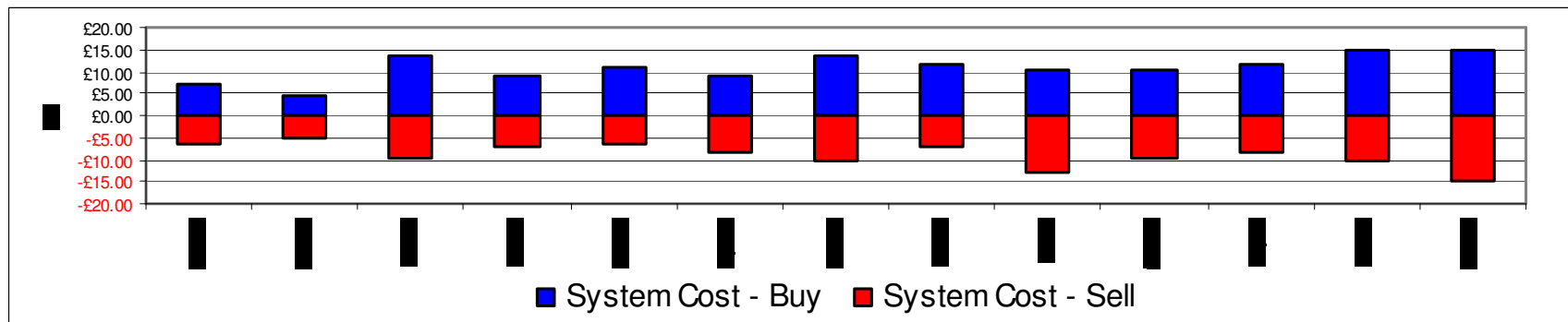
From 1<sup>st</sup> October 2010 to 30<sup>th</sup> November 2010



THE POWER OF ACTION

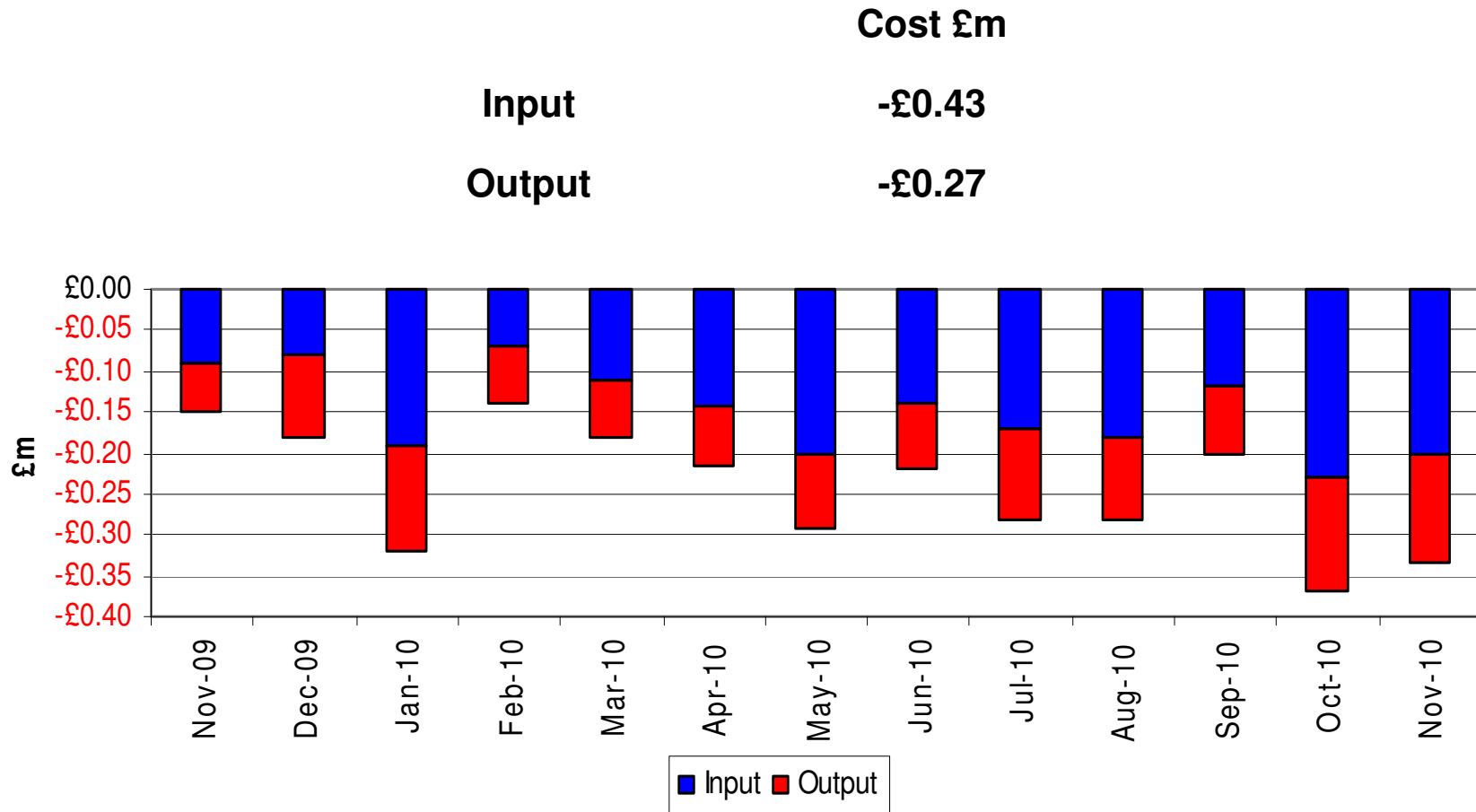
System	Quantity (TWh)	Average Price (p/KWh)	Average Price (p/therm)	Cost £m
<b>System Buy</b> Shipper overdelivery/cost to neutrality	1.91	1.54	45.21	£29.42
<b>System Sell</b> Shipper underdelivery/revenue to neutrality	-1.50	1.67	49.03	-£25.09

**Net Position 0.41 Buy £4.33**



# Scheduling Revenues

From 1<sup>st</sup> October 2010 to 30<sup>th</sup> November 2010

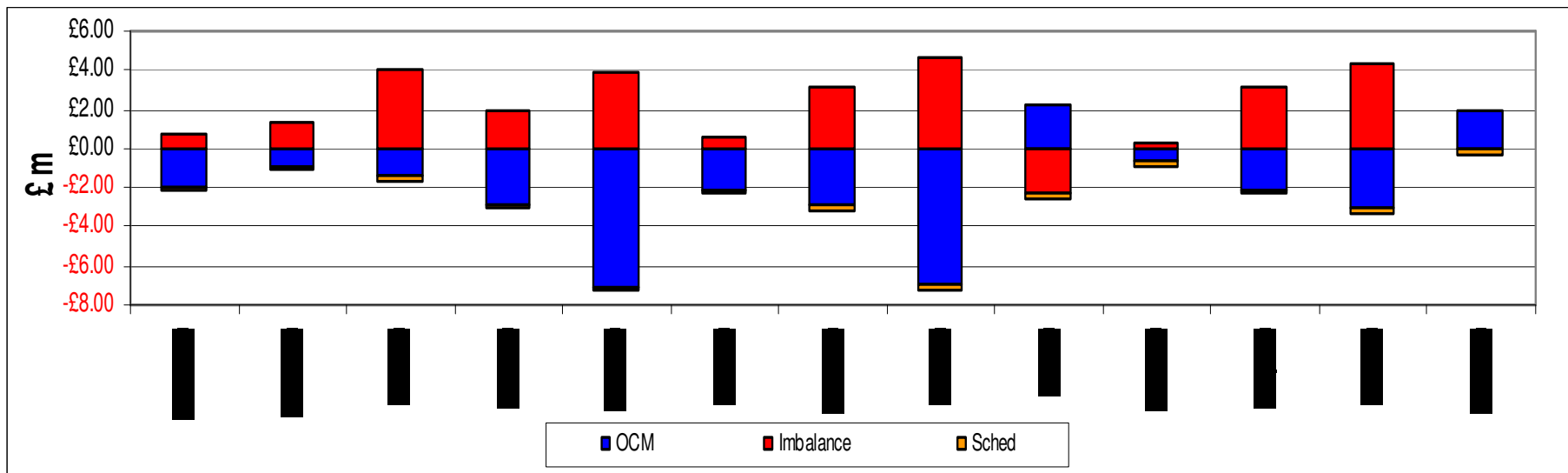




# Balancing Costs

From 1<sup>st</sup> October 2010 to 30<sup>th</sup> November 2010

	£m
Transporter actions on OCM	-1.10
Imbalance Charge	4.34
Scheduling Charge	-0.71
<b>Balancing Cost</b>	<b>2.53</b>

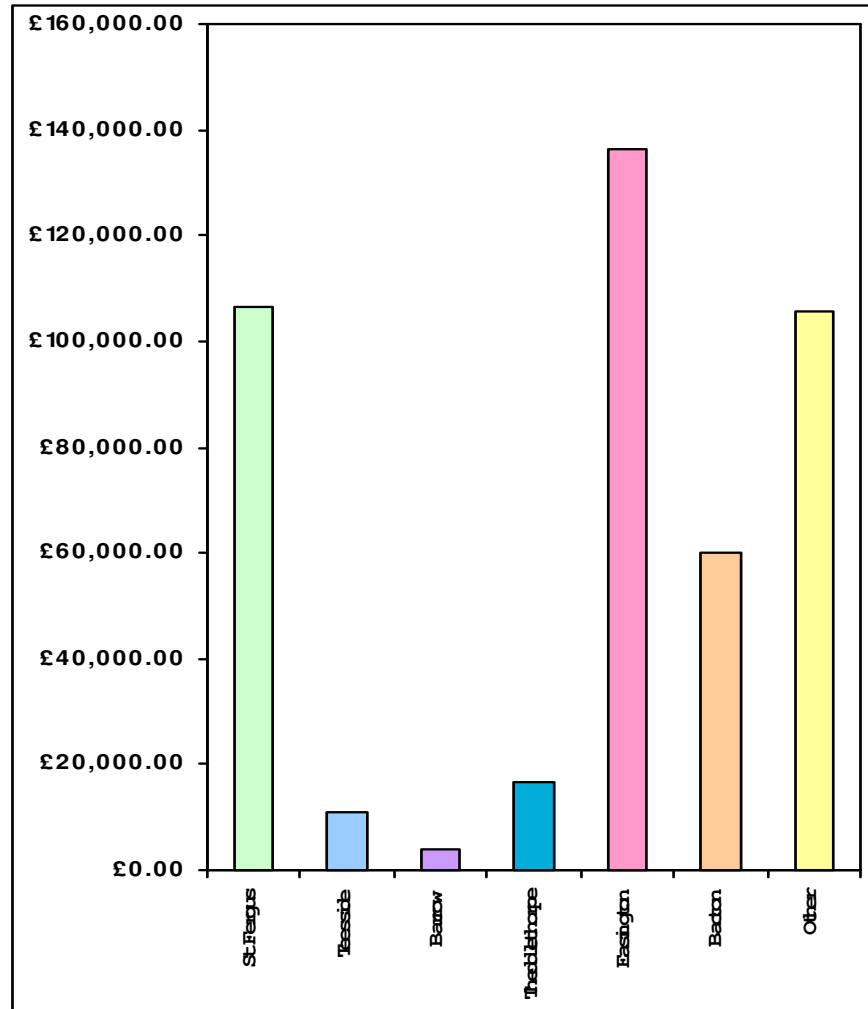


# Capacity Neutrality

Revenues from DSEC and DAI

From 1<sup>st</sup> April 2010 to 30<sup>th</sup> November 2010

ASEP	Revenue
St Fergus	-£106,456.86
Teesside	-£11,157.08
Barrow	-£3,964.45
Theddlethorpe	-£16,543.76
Easington	-£136,531.59
Bacton	-£59,859.04
Other	-£105,548.59
TOTAL	-£440,061.37



# Capacity Neutrality

Prompt Buy Backs

From 1<sup>st</sup> April 2010 to 30<sup>th</sup> November 2010

**nationalgrid**

THE POWER OF ACTION

ASEP	Cost	No.of days	Volume (kWh)
St Fergus	£0	0	0
Teesside	£0	0	0
Barrow	£0	0	0
Theddlethorpe	£0	0	0
Easington	£0	0	0
Bacton	£0	0	0
TOTAL	£0	0	0

# Capacity Neutrality

Capacity Management Agreement (Including RMTTSEC)

From 1<sup>st</sup> April 2010 to 30<sup>th</sup> November 2010

---

Month	Cost
April 2010	£0.00
May 2010	£0.00
June 2010	£0.00
July 2010	£0.00
August 2010	£0.00
September 2010	£0.00
October 2010	£0.00
November 2010	£0.00
Total	£0,00

# Capacity Neutrality

Revenues from Entry Capacity Overruns and Non-Obligated Sales



THE POWER OF ACTION

From 1<sup>st</sup> April 2010 to 30<sup>th</sup> November 2010

Month	Entry Capacity	Non-Obligated Sales
April 2010 *		£0
May 2010	-£13,825.95	-£516.35
June 2010	-1,083.26	£0
July 2010	-77,085.71	£0
August 2010	-652.54	£0
September 2010	-£1,190.84	£0
October 2010	-£2,977.87	-£56,215.68
November 2010	Awaiting Data	-£54,168.00
Total	-£96,816.17*	-£110,900.03

\* Excluding Entry Capacity Overrun Charges from April 2010

# Capacity Neutrality

Revenues from Locational Sells and PRI Charges

From 1<sup>st</sup> April 2010 to 30<sup>th</sup> November 2010

Month	Revenue
April 2010	-£1,677,416
May 2010	£0
June 2010	£0
July 2010	£0
August 2010	-£567,734
September 2010	£0
October 2010	£0
November 2010	-£110,028
Total	-£2,355,178

# Capacity Neutrality Net Cost / Revenue

From 1<sup>st</sup> April 2010 to 30<sup>th</sup> November 2010

DSEC/DAI Revenue	-£440,061.37
Buy back costs	£0.00
Capacity Management Agreement	£0.00
Entry Capacity Overrun Revenue *	-£96,816.17
Non-Obligated Sales Revenue	-£110,900.03
Revenue from Locational Sells and PRI charges	-£2,355,178
Net Revenue	-£3,002,955.57

\* Excluding Entry Capacity Overrun Charges from April 2010