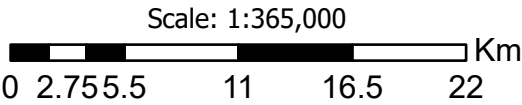




National Gas High Pressure
Gas Pipe Location

NU

Gas Pipeline



© National Gas Transmission
Contains OS data licensed under the Open
Government Licence.
© Crown copyright and database right (2023)

Pipeline data correct as of 18 May 2023.
Map created on 18 May 2023.
Map produced in the OSGB 1936 Coordinate
Reference System.

If you are planning to undertake any work please
see the following website:
<https://lsbud.co.uk/>
or contact the Asset Protection team at least 14
days in advance on 0800 970 7000 or
box.assetprotection@nationalgas.com

The National Grid corporate GIS shapefiles are
available to download from the website using the
following link:
[https://www.nationalgas.com/electricity-transmission/
land-and-assets/network-route-maps](https://www.nationalgas.com/electricity-transmission/land-and-assets/network-route-maps)

For further advice on GIS and mapping, please
contact the GTO Data Delivery Team at:
Box.GTAM.DataDeliver@nationalgrid.com

